



GRESHAM

WINTER 2026

A NEWSLETTER FOR RESIDENTS

Above: Slider the otter lives at Nadaka Nature Park. Thanks to Gresham Outdoor Public Art!

Hometown highlights

There's nothing we can't accomplish when we work together. It's an honor to partner with this incredible community to make great things happen in Gresham.

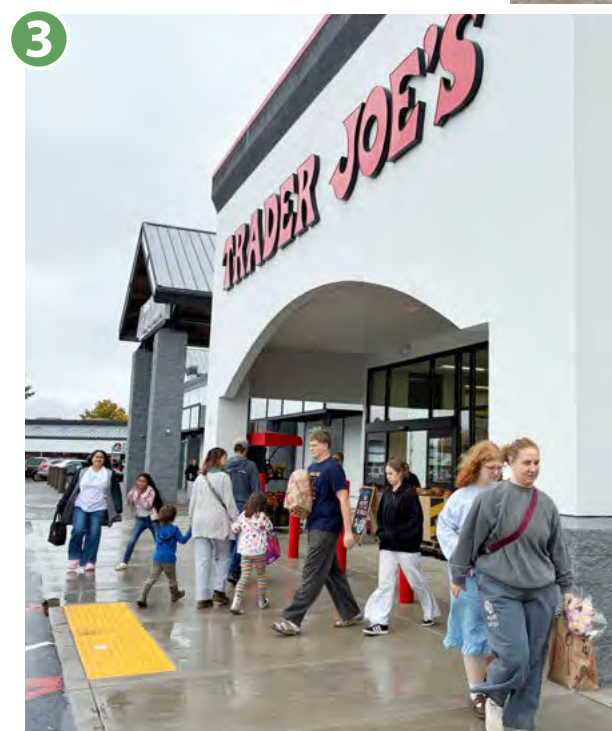
1. Thanks to the Fire and Police Levy, the City retained 57 public safety professionals while adding 16 new positions in 2025.

2. The Gresham Lilac Run presented by Unitus Community Credit Union raises \$18,000 for Loco Por La Aventura.

3. Specialty grocer Trader Joe's invests in Gresham and finally opens its doors.

4. Gradin Community Sports Park debuts new grant-funded dog park, playground, lighted pickleball courts and more!

5. The Homeless Services team helps 95 households, including children, find permanent housing.



-  GreshamOregon.gov
-  Facebook.com/CityofGresham
-  Instagram.com/CityofGresham
-  X.com/CityofGresham
-  Youtube.com/CityofGreshamOregon

PRESORT
STANDARD
U.S. Postage
PAID
Gresham, OR
Permit #168

POSTAL CUSTOMER
*****ECRWSS*****

INSIDE THIS EDITION

Winter weather tips and resources to stay warm and safe.

See Page 4



A MESSAGE FROM THE MAYOR 'What I'm excited for in 2026'



Top left: Trader Joe's grand opening; right, Gradin Community Sports Park tour.

Gresham has big momentum. Absolutely. Going into 2026, Gresham is crushing it.

Recent feedback from retail and commercial brokers underscores the city's economic growth. Trader Joe's has opened, Raising Cane's is breaking ground, In-N-Out is on the way, and Chick-fil-A is here. We have all four of these top national retailers coming. Every other community across Oregon is asking for them.

Local small businesses are thriving too. Downtown Rockwood's Market Hall and microbusinesses are attracting attention and visitors from across the region. The momentum isn't just about national

stores; it's about our whole community coming together.

The new library

The new library is a cornerstone project for the city. Libraries today aren't just about books; they're about access to knowledge and opportunities for upward mobility. It's a community gathering space, a hub for creativity, learning, and connection.

Multnomah County's \$135 million facility will feature a 200-seat auditorium,

a creative maker space with 3D printers and laser cutters, and audio and video recording rooms. The library is expected to open in late spring 2026.

Expanding public safety

Thanks to the recently passed Fire and Police Levy, Gresham has retained 57 public safety professionals while adding 16 new positions in 2025. The Police Department is almost fully staffed.

Having more officers on the streets allows them to assist and engage with

our community, not just respond to crime. It's truly a value to our community.

Gresham is building a future that serves every resident. We're keeping promises, and 2026 is going to be a year of progress.

– Mayor Travis Stovall

Contact Mayor Stovall at
Mayor@GreshamOregon.gov

Garage to Storefront Come grow with us

Calling all small business dreamers – are you ready to open your doors?

The City's groundbreaking Garage to Storefront program might be just the boost you need to go from dream to reality.

"It helps relieve some of the first-time fees for small business owners and it helps fill vacant storefronts," said GeriLinn Van Beek with the City's Small Business Center.

Garage to Storefront covers first-year business license and permit fees, which could include tenant improvements or plumbing/electrical fees.

The program supports various small businesses, including restaurants, salons, retail shops and gift stores.

Twisted Treasures in historic downtown is a new vintage/collectible shop success story. Owner Amy Frugoli says Garage to Storefront helped cover her business license and occupancy permit.

"Thank you for being on my side," she said, advising others to "use the resources the City's providing."

"Every little thing helps, especially when someone sees me working hard



Small business owner Amy Frugoli opened Twisted Treasures in May in historic downtown.

and says, 'We want you here and we're here to help.'"

The Economic Development team is visiting new small businesses with celebration plaques for their shops.

"We want to recognize these businesses for taking the step into ownership as well as learn about what's in their shops, their dreams and to be able to tell the community they're here," Van Beek said.

Garage to Storefront has helped 431 small businesses save \$237,717 in permit fees since 2010.

Savings average \$2,500 and higher. The program helps around 12 businesses start up per year.

Learn more at
**GreshamOregon.gov/
Garage-to-Storefront** or call the
Small Business Center at 503-618-2640.

About Garage to Storefront

We want you here! Garage to Storefront waives City business fees in target areas.

New or expanding businesses criteria

- ▶ Be a new business, or
- ▶ Be an existing Gresham business expanding by at least 10%.
- ▶ Be located within the Central Rockwood, Civic Neighborhood and Downtown boundaries.
- ▶ Occupy no more than 5,000 square feet.

Property owner criteria

To remodel existing or vacant commercial space, or to improve the building's façade:

- ▶ Be located in Central Rockwood, Civic Neighborhood or Downtown.
- ▶ Be an existing building.
- ▶ Do not exceed 5,000 square feet for each leasable tenant space in final configuration and the building must not exceed 30,000 square feet.

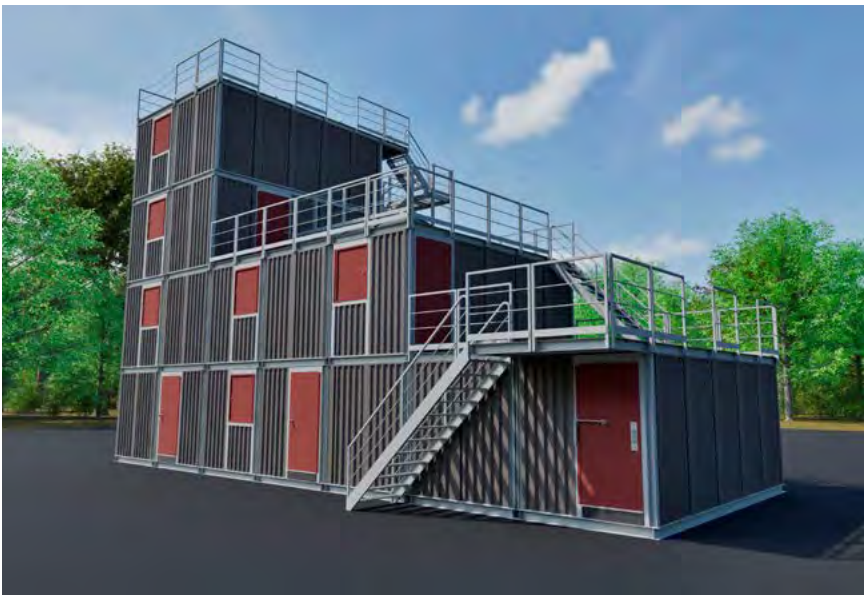
All participants must sign an agreement with the City.

A new era of training for Gresham firefighters

A new state-of-the-art training tower is rising at Gresham Fire’s Training Center, ushering in the next generation of firefighter education. The modern structure replaces the 1960s-era tower that was demolished in September.

“We need a bigger and better prop, basically,” said Training Capt. Andrew Goeden. The new tower will feature realistic single-family and apartment-style floor plans, plus enough height for rappelling and rooftop ventilation drills.

For decades, generations of firefighters ran and pulled hose up the old tower’s steps to build skill, strength and endurance, including one unforgettable search-and-rescue exercise that involved suspending a limousine from the top.



Above: Gresham firefighters practice on the original 1960s training tower. Right: Rendering of the new training tower, set to open in 2026.

“The (old) tower became legendary in its own right,” Assistant Chief Jeffrey Hairston shared in a farewell email before its demolition. “It stood as a constant in our training, helping shape the caliber of firefighters who serve this department and city.”

The new four-story, 2,600-square

foot tower will provide two burn rooms, fire props and anchors for rope-rescue training.

“I’ve seen plans for the new tower,” said Gresham Firefighter Gabe Teeny, a recent Fire Academy graduate. “I think the training opportunities for us and the other agencies who train here are

going to be great.”

Funded by a State of Oregon grant and American Rescue Plan Act (ARPA) dollars approved by Gresham City Council, the \$1 million structure comes at no additional cost to Gresham taxpayers – delivering a safer, more capable future for the city’s firefighters.



Meet the speed trailer – it’s got flash but no name

We’ve heard from you: Road safety and speeding are key concerns for the community. So, the Gresham Police Department is rolling out a new tool to help keep neighborhoods safe.

A mobile speed trailer has hit the streets of Gresham.

“For drivers who may simply not realize how fast they are going, the trailer displaying their speeds may be all the encouragement they need to slow down,” said Officer Jarom Sweazey.

“It’s not a substitute for enforcement but it’s a simple and effective way to raise awareness.”

Request the speed trailer

Know a location where you’d like to see the speed trailer? A neighborhood, school zone, or other problem spot?

Call 503-618-2700 to request it.

Together we can make Gresham’s roads safer.

Name the speed trailer

Have an idea for a name to promote safe streets? Enter the contest to name the trailer.

► Submit your ideas by Jan. 15, 2026. Officers will narrow it down to three finalists.

► The top three names will be posted on the City’s website and social channels for a community vote.

► Enter by emailing EngageGPD@GreshamOregon.gov. Follow @greshampolice on social media for more ways to enter.



Fire station open houses spotlight safety levy efforts

The weather couldn’t have been better as more than 1,000 Gresham residents joined the City’s Trunk or Treat event at Fire Station 74 on Oct. 30. The event kicked off a series of fire station open houses the City will host through spring 2026.

Families explored real-life emergency vehicles and chatted with Gresham Police and Fire staff about their work keeping the community safe.

On Nov. 15, the City held another open house at Fire Station 71, where police officers and firefighters read stories to young children.

“We’re always excited to welcome the community into our stations to see what we do,” said Gresham Fire Assistant Chief Jeffrey Hairston. “It’s a great opportunity for us to listen, connect and hear how

people feel about public safety in Gresham.”

Learn more about upcoming open houses and other City events at GreshamOregon.gov/Events.

Stay updated on the latest Fire and Police Levy information at GreshamOregon.gov/Fire-and-Police-Levy.

Your investment at work!



Watch Fire and Police Levy videos on the City’s YouTube playlist.





28 ways to beat the winter blues

1. Avoid flooding by raking your neighborhood storm drains free of leaves and debris, as well as your gutters.

2. Drain outside pipes and cover faucets. This protects water pipes from freezing temperatures.

3. Seal air leaks and cracks with caulk or weatherstripping to keep warm air in, cold air out, and heating costs down.

4. Insulate walls and attics. Better insulation means a cozier, quieter home with lower energy bills.

5. Never burn or leave candles unattended in a home or apartment.

6. Chimneys should be cleaned for creosote buildup before using.

7. Remove snow drifts from flat roofs.

8. Clear snow from driveways and walkways to maintain police and fire access during an emergency.

9. De-ice safely. Local hardware stores stock sand, gravel and deicer. Avoid using rock or table salt, both are toxic to streams, soil and plants.

10. Close your garage door at night. Forgetting to close the door is like a big open mouth on the house saying, "Come inside and take what you find."

11. Stock up on food. Keep a supply of food that doesn't require cooking if the power goes out. Build an emergency kit: GreshamOregon.gov/Emergency-Preparedness.

12. Freeze the grease, save the drain! Holiday cooking? Never pour fats, oils or grease down sinks, toilets or garbage disposal.

13. Celebrate responsibly. Get home safely, and don't let friends and family drink and drive. Plan ahead with a designated driver or alternative transportation.

14. Keep heat in by using curtains or window film. Adding an extra layer against the cold is especially important during winter storms and power outages.

15. Get an energy assessment to find out where your home loses heat, how to plan smart upgrades and to save money. See Page 6.

Winter weather resources

Winter means wind, rain and snow. Stay safe, warm and dry with these local resources. Save 911 for life-threatening emergencies only.

16. Flooding

To report broken City water pipes, a rain hazard or flooding in the public right-of-way, call the Operations Center at 503-618-2626 between 7:30 a.m. and 4:30 p.m. Monday through Friday. After hours or weekends, call 503-661-3906. The Operations Center, located at 2123 SE Hogan Road, features a fill-your-own sandbag station for residents. Bring a shovel. Bags provided.

17. Winter road operations

The City's winter response route consists of three categories: Priority 1 (hospital and emergency routes, arterial streets and bridges); Priority 2 (steep grades, through and collector streets); and Priority 3 (residential streets, cul-de-sacs and dead ends).

If bad weather persists, crews may

be required to stay on Priority 1 and 2 streets until weather improves.

Use the City's interactive plow map to see if your street is a Priority 1, 2, or residential street at GreshamOregon.gov/Severe-Weather/#RoadOperations.

18. Fire safety reminders

Do not use indoors: generators, barbecues, gas-supplied heaters, propane, or any type of appliances that produce carbon monoxide. Using a space heater? Let your space heater have its space. A minimum of 3 feet between heater and combustibles. Plug space heaters directly into the wall, not an extension cord.

19. Recycling tips for wind

Place carts out in the morning by 6 a.m. instead of the night before. Fill recycling cart only 1/2 or 3/4 full, and place heavier items on top to prevent loose recycling from blowing out. Do not strap down lids or place rocks on top; carts cannot be serviced with our automated collection vehicles.

20. Car theft prevention tip

Never leave your car running unattended. Vehicles left running to warm up are especially obvious in cold weather.

Safety

21. Severe weather information
GreshamOregon.gov/Severe-Weather

22. Power outages or downed lines
PortlandGeneral.com/Outages or 503-464-7777

23. Cell phone emergency and service alerts
Register at PublicAlerts.org/Signup

24. Preparedness information
GreshamOregon.gov/Emergency-Preparedness

25. Food and emergency shelter information, call 211

26. Water shut off assistance
If you are unable to shut the water off yourself, call the Operations Center during business hours, 503-618-2626. After hours, call 503-661-3906. Do not call 911.
GreshamOregon.gov/Winter-Water-Pipes.

27. Weather tips and alerts, follow the City of Gresham on social media (Facebook, X, Instagram)

28. Winter and water pipes

Prepare before freezing temperatures to avoid frozen and burst pipes at home.

- Drain outside pipes and faucets.
- Cover or insulate exterior faucets and vents.
- Insulate pipes in unheated areas.

Locate your main shut-off valve

Know where it is and how to turn it off. It may be near the water heater, near an outside hose bib, inside the garage, in the basement or crawl space, or near the water meter.

During freezing weather

- Keep heat at 55° F or higher.
- Open cabinet doors under the sinks.

If a water pipe bursts

If you need help locating your water shut-off valve or turning off your water at the meter, call the Operations Center at 503-618-2626. After hours emergency? Call 503-661-3906. Do not call 911. A burst pipe is not a life-threatening emergency.

Learn more at GreshamOregon.gov/Winter-Water-Pipes.

✂ YES, YOU'LL WANT TO CUT ME OUT!

Gresham Parks 2025: A year in motion

"Every project, every clean-up, and every hour of play brings us closer to a city where everyone feels they belong outdoors."
— Astrid Dragoy, Parks Program Manager

Gresham Parks has been hard at work taking care of our system and building the foundation for our community's future. "I'm so proud of what our Parks team has achieved this year. We're caring for the parks our community enjoys today while laying groundwork for the parks and trails that will shape Gresham's future," Dragoy said. Together, these efforts reflect Gresham's ongoing commitment to creating vibrant, safe and welcoming spaces for everyone.

Gresham Parks 2035

This winter we will finalize Gresham's parks and trails plan for the next 10 years. Thank you to everyone who shared ideas and feedback to help improve Gresham's parks, trails and recreation areas through 2035. Learn more at EngageGresham.org/Parks-2035.



'Tis the season to recycle right: Clean recycling tips for the holidays



Holiday food waste prevention tips

This season, include food waste prevention in your holiday meal plans.

Use the Guest-imator. Calculate how much food you need to feed your guests. Try it at savethefood.com/guestimator.

Send guests home with food. Avoid an overfull fridge by asking guests to bring containers for leftovers.

Use your freezer. Meat, soups, cooked veggies and bread freeze well.

Get creative with leftovers. Turn them into casseroles, burritos, wraps and stews.

Get more tips at EatSmartWasteLess.com. Also available in Spanish.

Holiday service schedule

Both Christmas and New Year's Day fall on Thursday. Garbage, recycling and yard debris service both weeks may be delayed by one day.

REGULAR PICK-UP DAY	HOLIDAY SCHEDULE
Monday.....	No change, regular collection
Tuesday.....	No change, regular collection
Wednesday ..	No change, regular collection
Thursday.....	Pickup on Friday
Friday.....	Pickup on Saturday

Paper gift bags
Paper greeting cards
Wrapping paper (non-metallic)
Paper catalogs/junk mail
Cardboard
Metal cans
Newspaper

Bows and ribbons
Bubble wrap/Styrofoam™
Foil wrapping paper
Plastic bags and wraps
Plastic mailer envelopes
Plastic packaging
To-go cups/containers

MAKE SURE THE LID CAN CLOSE.

RECYCLE CART

TRASH ONLY

Recycle right

Contamination happens when incorrect items go in the recycling bin, damaging equipment, creating problems and risking worker safety.

Never put these things in the recycling

- ✗ Plastic bags
- ✗ Medical/hazardous waste
- ✗ Wires, cords and cables
- ✗ Food and liquids
- ✗ Batteries and electronics
- ✗ Aerosol containers that aren't empty

Call Metro for disposal options, 503-234-3000. Learn more at GreshamOregon.gov/Recycling.

Tips for tree recycling

Apartments and businesses: For tree disposal options, call your property manager, hauler, or Metro at 503-234-3000.

Homes: Customers in single-family, duplex, triplex and fourplex homes may cut trees to fit inside the yard debris cart for free. The lid must close. No tinsel, wires, etc.

Whole, natural trees less than 6 feet may be set at the curb for an extra \$4.71 fee.

Trees over 6 feet tall must be cut into sections less than 6-feet in length. Each section at the curb is a \$4.71 fee.

Flocked trees under 6 feet can be set out with garbage for a \$6.49 fee. Cut taller trees into sections under 6 feet; each section costs \$6.49 to pick up.

Questions? Call 503-618-2525 or visit GreshamOregon.gov/Holiday-Recycling.



INSIDE CITY HALL

Mayor
Travis Stovall 503-618-2871

City Council Office 503-618-2871

City Council
Jerry Hinton, Council President
Kayla Brown
Janine Gladfelter
Cathy Keathley
Eddy Morales
Sue Piazza

Abandoned Vehicle Reporting 503-618-2248

Animal Services (Multnomah County) 503-988-7387

Building Permits 503-618-2845

Business Licenses 503-618-2370

Code Compliance 503-618-2248

East County Resolutions 503-618-3247

Fire/Police Non-Emergency 503-823-3333

Garbage/Recycling 503-618-2525

Housing Resources Coordinator 503-618-2721

Parks 503-618-2626

Planner on Duty 503-618-2780

Small Business Center 503-618-2640

Utility Billing 503-618-2373

City of Gresham 503-618-3000
1333 NW Eastman Parkway
Gresham, OR 97030

Pay a City bill online
GreshamOregon.gov/**Pay-Your-Bill-Online**

In-person customer service hours

Building and Permit Services
8 a.m.-4 p.m. Monday-Friday

Business Licenses
8 a.m.-4 p.m. Monday-Friday

Planner on Duty
8 a.m.-4 p.m. Monday-Friday

Utility Billing
8 a.m.-5 p.m. Monday-Wednesday
8 a.m.-4 p.m. Thursday and Friday

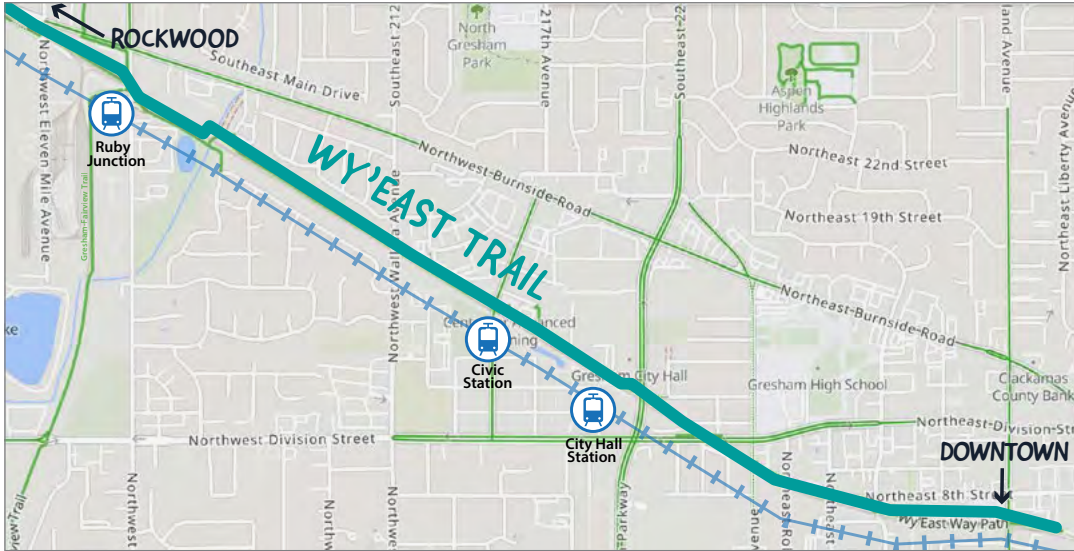
City Hall is virtually open for all services, online or by phone, from 8 a.m.-5 p.m. Monday-Friday.

GRESHAM is produced quarterly by the City of Gresham for its residents.

Issues are available for viewing at GreshamOregon.gov/Newsletters

The information in this newsletter is current as of the publication date. Call the City at **503-618-3000** to verify meeting dates and status of events, or visit GreshamOregon.gov/Events.

© City of Gresham



Walk this Wy'East Way

Stretching 2 miles from Rockwood to Downtown, the Wy'East Way trail is full of promise, and the community is helping shape its future.

Over the past year, the City has partnered with residents and local organizations to imagine a trail that's safe, clean and welcoming for everyone.

Through walking groups, bike rides and pop-up events, hundreds

of community members have shared their hopes for Wy'East.

"People want a trail that feels safe and cared for," said Planner Carly Rice.

Ideas include more lighting, trees and plants, seating, kid-friendly areas, fitness features, public art celebrating Gresham's diverse cultures, clear signage, and better trail connections.

Meet Sheldon the giant tortoise

Some ideas came to life through the Wy'East Design + Build Workshop Series, a collaboration between the City, Arise & Shine, City Repair Project and community members.

Over three sessions, more than 75

residents envisioned, designed and built trail improvements, culminating in a hands-on build day. Participants created paths, planted greenery, added gathering spaces and art features - and built a giant tortoise sculpture, named Sheldon by the community. This new community space is visible along the trail between the City Hall and Civic MAX stations.

This project is just the beginning. As funding becomes available, the City plans to continue adding art, shade, storytelling and other features to make Wy'East a trail that reflects and connects Gresham.

Learn more at GreshamOregon.gov/Gresham-Trails.



Gresham Lilac Run

Lace up and smell the lilacs! The City's Gresham Lilac Run, presented by Unitus Community Credit Union, returns Saturday, April 18, 2026.

Now in its eighth year, this event promotes healthy fun in our community for a good cause. The event's 5K run/walk, 10K and half marathon courses begin and end on the Springwater Trail at Main City Park.

The Lilac Run takes participants through some of Gresham's most scenic areas, including the Springwater, Saddle Butte and Butler Creek trails.

Thanks to our sponsors, 100% of the event costs are covered and race registration fees go to support youth and families in our community.

Make it a family affair. A free Little Lilac Run is open to children up to 12 years old. Register youth for the 400-meter or 800-meter dash along the Springwater Trail.

Visit GreshamOregon.gov/Lilac-Run for event registration details.



Tree Code Project update

We've been learning what's important to our community about trees in Gresham.

Based on the community's vision for our trees, the project team is proposing to update the City's tree goals and development rules.

The focus is on:

- Setting clear targets to increase tree coverage across the city.
- Aligning tree planting and replacement rules with community tree goals.
- Promoting the preservation of existing trees.
- Supporting both trees and new development.

Policy adoption

Public hearings for the tree policy updates are anticipated for late winter 2026.

Watch for details and learn more about the project at EngageGresham.org/Gresham-Tree-Code or call 503-618-2610.



Free electrification coaching

A smart move you can make for the climate is to reduce carbon emissions by switching from gas to electric appliances, heating and cooling systems, and vehicles.

This is called electrification, and Electrify Oregon offers free electrification coaching.

"Energy coaches work with folks at any knowledge level from learning what an energy audit is to finding the right products and navigating any situation, from being a renter to helping find contractors or getting rebates," said Denise Lopez, Climate Action Analyst.

One of the goals of our Climate Action Plan is to connect residents with a trusted, free resource to make going electric easier and more affordable, Lopez added.

To get started, visit electrifyoregon.org and fill out the "get a coach" form.

Questions? Email ClimateAction@GreshamOregon.gov or call 503-618-2525.

Photo credit: Electrify Oregon



Deicing tips for home

Plan ahead for safety and success to protect yourself, your pets and our water.

Before the storm

- Have a bucket of sand and gravel, plus a shovel, on hand.
- Use traction cleats on your shoes or boots.
- Apply sand and gravel for traction.
- Avoid using salt. It corrodes concrete and is toxic to soil, plants and streams.
- Use deicing products with magnesium, potassium or calcium sparingly. Mix with sand for the best results.
- Use a tarp or sheet on your car's windshield. Or apply a 3:1 vinegar-water solution.

After the storm

- Sweep up all products and put in the trash.
- Shovel snow into your yard, not into the street.

Learn more at GreshamOregon.gov/Severe-Weather or call 503-618-2525.




Looking for fun recreation this winter? Gresham Parks and Recreation partners with PlayEast! to offer recreation in Gresham for a fee.

- ▶ **Just 4 Kicks** for ages 2-13
 - Session 1 - Jan. 20 to Feb. 17, 2026
 - Session 2 - Feb. 24 to March 17, 2026
- ▶ **Parkour** for youth and adults
 - Session - Jan. 30 to March 7, 2026
- ▶ **Volleyball** for ages 6-12
 - Session - Jan. 30 to March 5, 2026

All the classes above are at Hall Elementary School.

Winter registration is open. Gresham residents may register for any class or activity.

Classes are fee-based, and scholarships are available for those in need. Questions? Email PlayEastInfo@FairviewOregon.gov or call 503-674-6238.

 For a complete list of activities, classes, descriptions, and updates, visit playeast.org. Register online or scan the QR code with your phone's camera.

A new water system is coming soon

Gresham and Rockwood Water will begin moving to all groundwater in late fall 2025

Our groundwater comes from the deep, naturally protected Sand and Gravel Aquifer. It's a year-round source of safe, reliable, high-quality drinking water used by Rockwood, Gresham, and other local communities.

Your water system is expanding

Starting in late fall 2025, Gresham and Rockwood will start delivering groundwater from the new Cascade Groundwater Alliance facilities with the goal of 100 percent groundwater by June 2026. These earthquake-resilient facilities will deliver 25 million gallons of safe, high-quality water a day for our community.

Some customers may notice slight differences in their water initially.

Our Water. Our Future.


Water at the tap will be 100 percent groundwater in June 2026. Your water will be continually tested and monitored before, during, and after the transition and will continue to be safe to drink all day, every day.

About the Cascade Groundwater Alliance

The Cascade Groundwater Alliance is a partnership between the City of Gresham and Rockwood Water People's Utility District to build and operate an independent, safe, and reliable water system.



Learn more:

 **City of Gresham**
503-618-2525
WaterResources@GreshamOregon.gov
GreshamOregon.gov/Cascade-Groundwater-Alliance

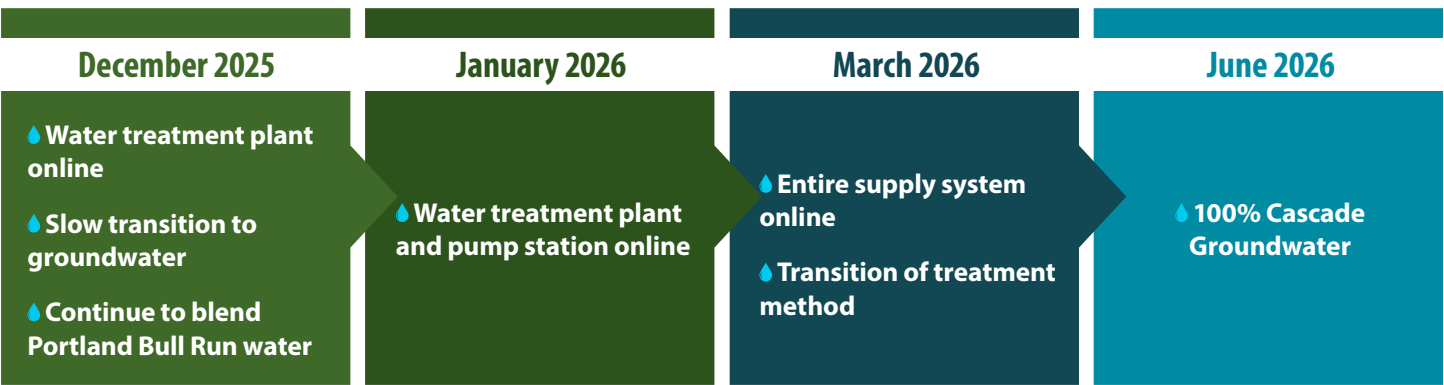


Benefits to you, our water customer



- **High-quality, safe** groundwater year-round.
- **Locally owned, controlled and operated** for customers in East Multnomah County.
- Shared ownership, costs and resources mean **long-term stable and predictable costs** for Gresham and Rockwood customers.
- **Modern water treatment facilities** with capacity to expand builds resilience and prepares us for current and future water needs.

Cascade Groundwater System: Transition Phases 1 and 2



City utility bill help

Your Utilities Team is here to help if you have questions about your bill for water, wastewater and stormwater services.

If you are experiencing or expect hardships with your utility bill, call us for payment options at 503-618-2373.

People who need help paying their City utility bill may apply for assistance.

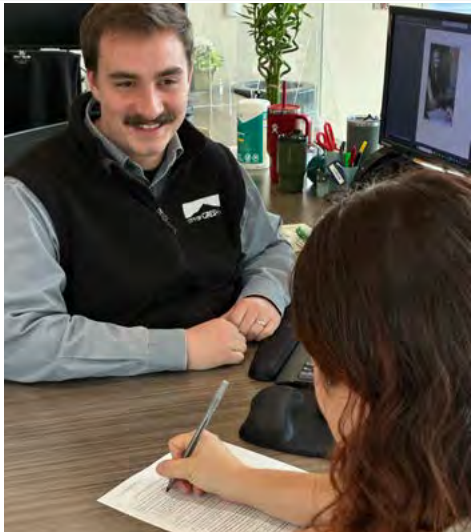
A family of four earning less than \$62,050 may qualify. A single person earning less than \$43,450 a year may qualify.

Qualifications

- ▶ Customer must have a Gresham utility bill account.
- ▶ Customer must verify income.
- ▶ Help applies to various housing types.

How to apply

- ▶ Apply online: GreshamOregon.gov/Utility-Financial-Assistance.
- ▶ Request a paper application by calling customer service or pick one up at the City Hall utilities counter.
- ▶ Applications in Spanish and Russian are available.





GET INVOLVED IN GRESHAM CITY CALENDAR



DECEMBER

- 14 Spirit of Chanukah (Grand Menorah Lighting)**, 5-8 p.m., Arts Plaza, spiritofgresham.org
- 15 Cupcake with a Cop**, 3:30-5 p.m., Sugar Cubed, GreshamOregon.gov/Events
- 18 Third Thursday**, 5:30-8:30 p.m., activities, historicdowntowngresham.org
- 19 Reindeer in Rockwood**, 4-7 p.m., Rockwood Market Hall, rockwoodmarkethall.com
- 20 Wag 'n Walk**, Red Sunset Park, 10 a.m.
- 21 Rockwood Market Hall Music Series**, JT Wise Band, 4-7 p.m., rockwoodmarkethall.com
- 25 Christmas observed**, City Hall closed

JANUARY

- 1 New Year's Day observed**, City Hall closed
- 2 Community Climbing Day**, 5-9 p.m., Rock Haven Climbing Gym, GreshamOregon.gov/Recreation
- 3 Teen Climbing Night**, 6-9 p.m., Rock Haven Climbing Gym, GreshamOregon.gov/Recreation
- 7 Wag 'n Walk**, Main City Park, 4 p.m., GreshamOregon.gov/Recreation
- 15 Third Thursday**, 5:30-8:30 p.m., activities, historicdowntowngresham.org
- 17 Teen Climbing Night**, 6-9 p.m., Rock Haven Climbing Gym, GreshamOregon.gov/Recreation
- 17 Wag 'n Walk**, Nadaka Nature Park, 10 a.m., GreshamOregon.gov/Recreation

- 20 Martin Luther King Jr. Day**, City Hall closed
- 24 Community Tree Planting**, Nadaka Nature Park, 9:45 a.m.-1 p.m., RSVP.friendsoftrees.org

FEBRUARY

- 4 Wag 'n Walk**, Bella Vista Park, 4 p.m., GreshamOregon.gov/Recreation
- 6 Community Climbing Day**, 5-9 p.m., Rock Haven Climbing Gym, GreshamOregon.gov/Recreation
- 7 Teen Climbing Night**, 6-9 p.m., Rock Haven Climbing Gym, GreshamOregon.gov/Recreation
- 9 Friday Night Basketball**, Grades 6-8, 6-8 p.m.; Grades 9-12, 8-10 p.m.; H.B. Lee Middle School, GreshamOregon.gov/Basketball
- 16 Presidents Day**, City Hall closed

- 21 Repair Cafe and Clothing Swap**, 10 a.m.-2 p.m., Centennial High School, GreshamOregon.gov/Repair-Cafe
- 21 Wag 'n Walk, Pat Pfeifer Park**, Gresham Arts Plaza, 10 a.m., GreshamOregon.gov/Recreation
- 21 Teen Climbing Night**, 6-9 p.m., Rock Haven Climbing Gym, GreshamOregon.gov/Recreation

MARCH

- 4 Wag 'n Walk**, Gradin Sports Park, 4 p.m., GreshamOregon.gov/Recreation
- 6 Community Climbing Day**, 5-9 p.m., Rock Haven Climbing Gym, GreshamOregon.gov/Recreation
- 7 Teen Climbing Night**, 6-9 p.m., Rock Haven Climbing Gym, GreshamOregon.gov/Recreation

- 16 Wag 'n Walk**, Red Sunset Park, 10 a.m., GreshamOregon.gov/Recreation
- 21 Teen Climbing Night**, 6-9 p.m., Rock Haven Climbing Gym, GreshamOregon.gov/Recreation



For a complete list visit GreshamOregon.gov/Events.

Winter walks, basketball and more at Gradin Community Sports Park

Bring your dogs, kids and pickleball paddles! Parks has opened early access to the new amenity plaza ahead of next summer's grand opening.

Please note: All sports fields remain closed for the winter until April 1, 2026.

WHAT'S NEW AT GRADIN

- The amenity plaza features:
- Dog park with areas for large and small dogs
 - Kids' play area
 - Eight lighted pickleball courts
 - Lighted basketball court

- Volleyball court
 - Picnic shelter
 - Paved 1-mile walking trail around the park
- The new plaza is funded by an Oregon State Parks grant.



Slam dunk! A new lighted basketball court.

What's open when at Gradin Sports Park

Open year-round

Dog park, walking trail, pickleball and basketball courts, volleyball and arboretum.

Open seasonally

Soccer fields, baseball/softball fields, picnic shelter, and restrooms.

PARKS RESERVATIONS

Sports fields: Reservations open the first Monday in February; season runs April 1-Oct. 31.

Picnic shelters: Reservations open mid-January for use May 1-Sept. 30.

Reserve online, by email or by phone:

GreshamOregon.gov/Parks-Reservations.
ParksReservations@GreshamOregon.gov.
503-618-2525.

NEIGHBORHOOD ASSOCIATION INFORMATION

Meetings may be virtual or in-person. See neighborhood meeting agendas posted at GreshamOregon.gov/Neighborhoods.

CENTENNIAL

Mary Edmeades, President
CentennialHood@gmail.com

CENTRAL CITY

For more information:
NeighborhoodServices@GreshamOregon.gov

GRESHAM BUTTE

Stephen Estes, President
GreshamButte@gmail.com
Second Wednesday of the month
September through May, 7 p.m.
Hybrid: Zoom or at the Kyoudou Center,
219 S. Main Ave.

GRESHAM PLEASANT VALLEY

Richard Barker, President

714-264-1752
GreshamPleasantValleyNA@gmail.com

HISTORIC SOUTHEAST

For more information:
NeighborhoodServices@GreshamOregon.gov

HOGAN CEDARS

For more information:
NeighborhoodServices@GreshamOregon.gov

HOLLYBROOK

Becky Sanchez, President
Hiscoe@yahoo.com

KELLY CREEK

Charles Teem, President
503-663-5066 or KellyCreekNA@gmail.com

NORTH CENTRAL

For more information:
NeighborhoodServices@GreshamOregon.gov

NORTH GRESHAM

Javon Williams, President
NorthGreshamNA@gmail.com
Second Wednesdays of Feb., May,
Aug., Nov., 6 p.m.
Migration Brewing

NORTHEAST

For more information:
NeighborhoodServices@GreshamOregon.gov

NORTHWEST

Kat Todd, President
Trevkat@hotmail.com or
President@NwnaGresham.org
Jan. 26, 7 p.m.
Hybrid: Zoom or at the Kyoudou Center,
219 S. Main Ave.

POWELL VALLEY

Nancy Inglehart, President
PowellValleyNa@gmail.com

ROCKWOOD

Catherine Nicewood, President
503-285-6587 or
RockwoodPresident@gmail.com
Third Mondays of March, June, Nov., 6 p.m.
Rockwood Village Community Center
783 SE 185th Ave.

SOUTHWEST

Kathy Gardenhire, President
503-661-6554 or kg6554@frontier.com
Fourth Thursdays of Jan., April, July, Oct.,
7 p.m.
Hybrid: Zoom or at the Kyoudou Center,
219 S. Main Ave.

WILKES EAST

Kris Friermuth, President

503-709-9564 or
lkfreiermuth@gmail.com
www.wilkeseastna.org
Second Mondays of March, Aug., Nov.,
7 p.m., Moose Lodge, 16411 NE Halsey St.

COALITION OF GRESHAM NEIGHBORHOOD ASSOCIATIONS

Carol Rulla, Co-President, 503-707-2921
Jim Buck, Co-President, 503-830-2344
GreshamNeighborhoodCoalition@gmail.com
Monthly, every second Tuesday, 7 p.m.,
Zoom

Call the Neighborhoods Office
at 503-618-3214 or visit
GreshamOregon.gov/Neighborhoods