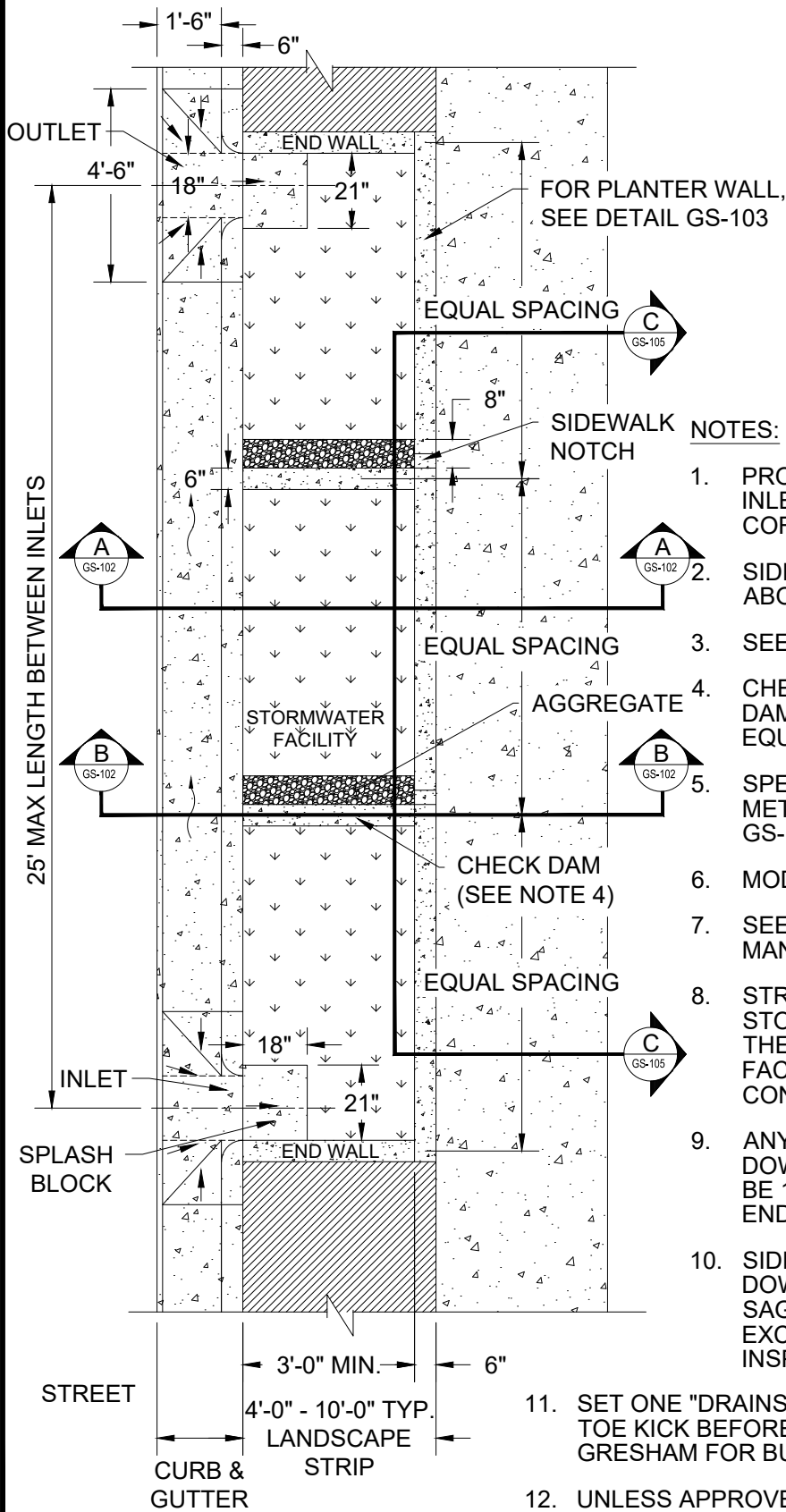


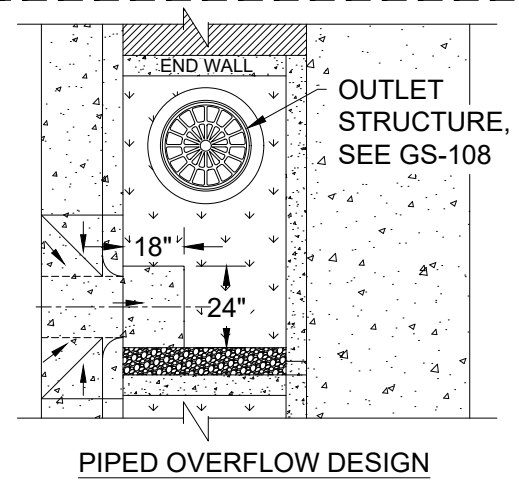
FILENAME: y:\inter-departmental\development engineering projects\public works standards\2.0 pws revision copy\details\500_water\water cad\516.dwg, Plotted 7/3/2018 9:55 AM, By: Kimberly Bogert, USER607



PLAN VIEW

NOTES:

1. PROVIDE STATIONS AND ELEVATIONS AT EVERY INLET, OUTLET, CHECK DAM, PLANTER WALL CORNER, AND SIDEWALK NOTCH.
2. SIDEWALK NOTCH ELEVATION MUST BE SET ABOVE INLET AND OUTLET ELEVATIONS.
3. SEE DETAIL GS-104 FOR INLET DETAILS.
4. CHECK DAMS REQUIRED PER GS-105. CHECK DAMS SHALL BE EQUALLY SPACED TO CREATE EQUALLY SIZED CELLS.
5. SPECIAL REQUIREMENTS FOR WATER LINES, METERS, AND FIRE HYDRANTS; SEE DETAIL GS-109.
6. MODIFIED CURB AND GUTTER: SEE DETAIL GS-103.
7. SEE GRESHAM STORMWATER MANAGEMENT MANUAL FOR PLANTING GUIDANCE.
8. STREETLIGHTS SHALL BE PLACED OUTSIDE OF STORMWATER FACILITIES, UNLESS APPROVED BY THE CITY. IF STREETLIGHTS ARE PLACED IN A FACILITY, PGE APPROVED FOUNDATION WITH 1' CONCRETE SURROUND MUST BE USED.
9. ANY ADDITIONAL INLETS SHALL BE LOCATED ON DOWNSTREAM SIDE OF CHECK DAMS AND SHALL BE 18" X 24" IF NOT LOCATED ADJACENT TO AN END WALL.
10. SIDEWALK NOTCHES TO BE LOCATED AT DOWNSTREAM SIDE OF EACH CHECK DAM, AT ANY SAG OR LOW POINT, AND AT INTERVALS NOT EXCEEDING 15 FEET OR AS DIRECTED BY THE INSPECTOR.
11. SET ONE "DRAINS TO RIVER" BUTTON CENTERED ON SIDEWALK TOE KICK BEFORE CONCRETE HAS DRIED. CONTACT CITY OF GRESHAM FOR BUTTON SPECIFICATIONS (TYPICAL).
12. UNLESS APPROVED BY THE MANAGER, MAXIMUM LENGTH OF SINGLE PLANTER SHALL BE 100 FEET. A 4-FOOT STEP-OUT AREA WITH NO ABOVE GROUND INFRASTRUCTURE SHALL BE PROVIDED BETWEEN ADJACENT PLANTERS.



PIPED OVERFLOW DESIGN

NTS

CITY OF
GRESHAM

PLANTER PLAN VIEW

PWS VERSION: JAN 2026

DRAWN KRB

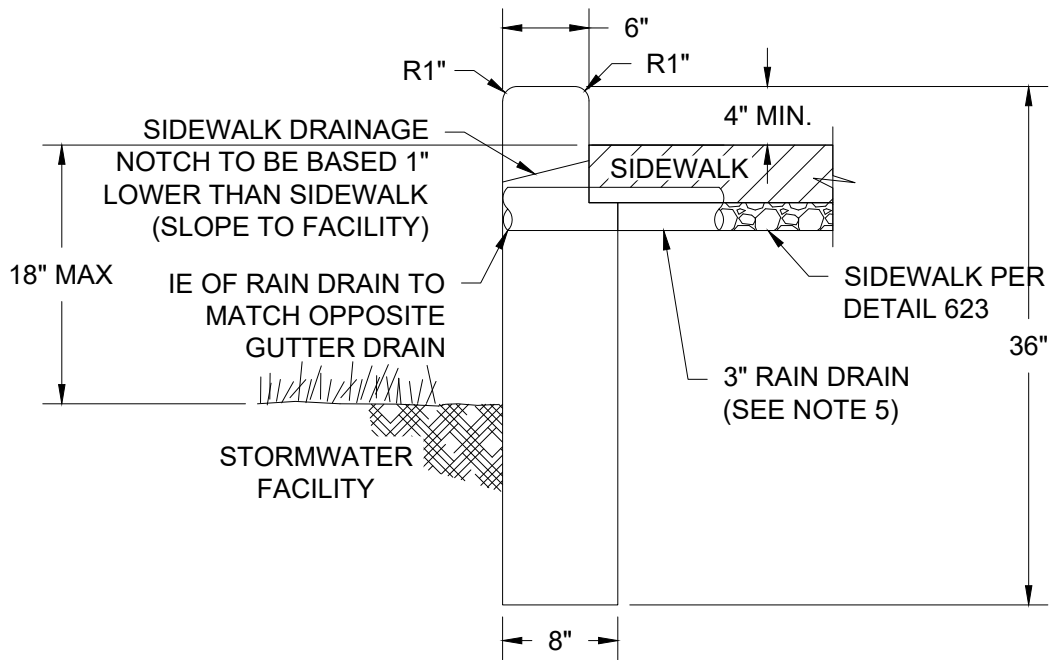
REV. DATE OCT 2025

APPR.

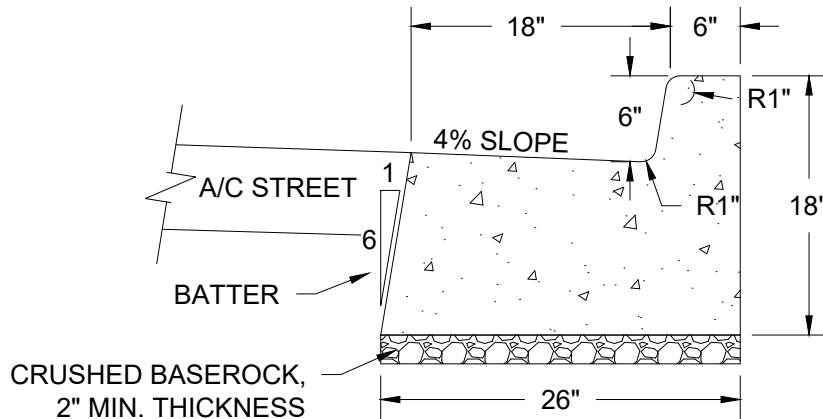
DETAIL NO. GS-101

DETAIL NO. **GS-102**

FILENAME: y:\inter-departmental\development engineering projects\public works standards\2.0 pws revision copy\details\gs_green streets\green street cad\gs-103.dwg, Plotted 11/20/2025 2:12 PM, By: Anthony Dollowitch, ANSI FULL BLEED A (8.50 X 11.00 INCHES)



PLANTER WALL ADJACENT TO WALK



**THICKENED MONOLITHIC CURB AND GUTTER
FOR STREET SIDE OF RAIN GARDENS**

NOTES:

1. PCC SHALL BE 4,000 PSI STRENGTH AT 28 DAYS.
2. CONTRACTION JOINTS SHALL BE PLACED AT 15' MAX. SPACING.
3. CRUSHED BASE ROCK SHALL BE COMPACTED TO 95% RELATIVE DENSITY PER ASTM D1557.
4. FINISH ALL EXPOSED CONCRETE SURFACES.
5. IF RAIN DRAIN WILL BE PIPED TO FACILITY, EXTEND 3" SCHEDULE 40 PVC DRAIN PIPE FROM INSIDE OF PLANTER TO CONNECTION AT BACK OF SIDEWALK. RAIN DRAIN SHALL BE LOCATED ABOVE GUTTER ELEVATION.
6. ADD 2" WIDE SHELF WHEN PLANTER WALL IS DESIGNED TO BE ADJACENT TO SIDEWALK.

NTS

**CITY OF
GRESHAM**

PLANTER WALL AND MODIFIED CURB

PWS VERSION: JAN 2026

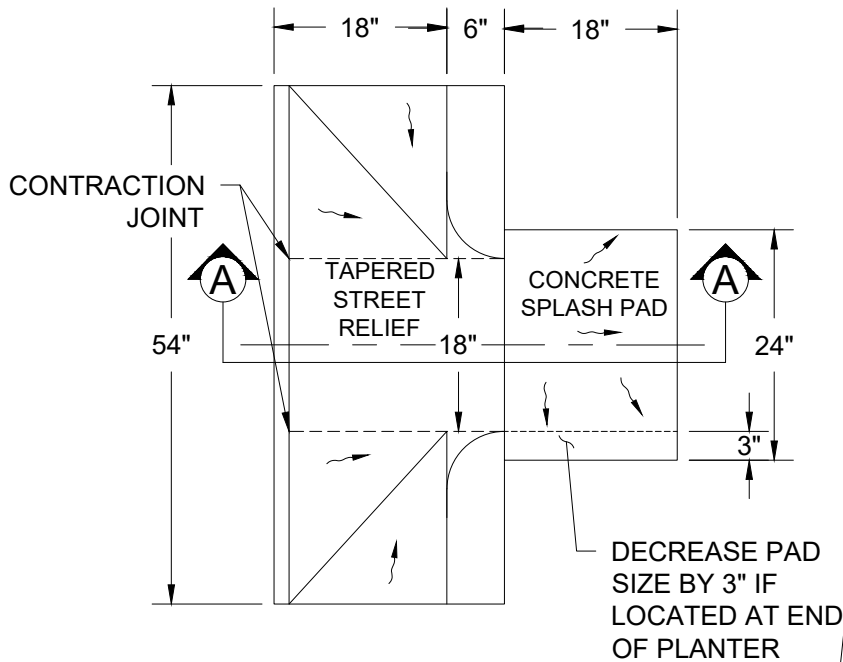
DRAWN KRB

REV. MAR 2021
DATE

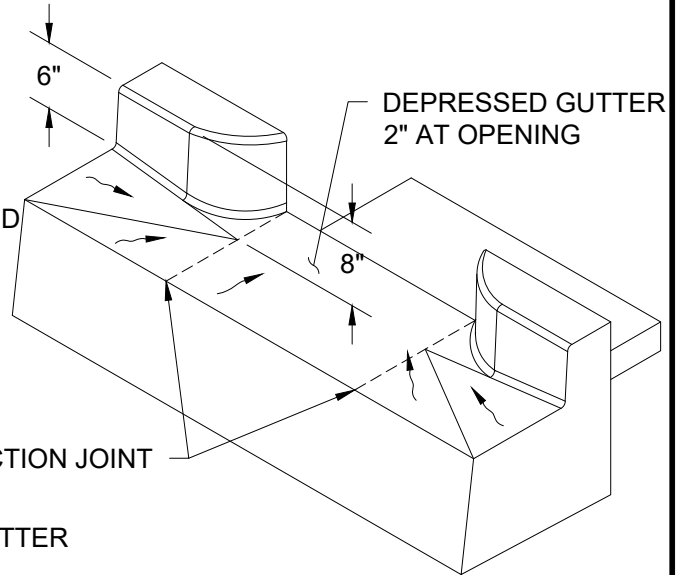
APPR. 

DETAIL NO. GS-103

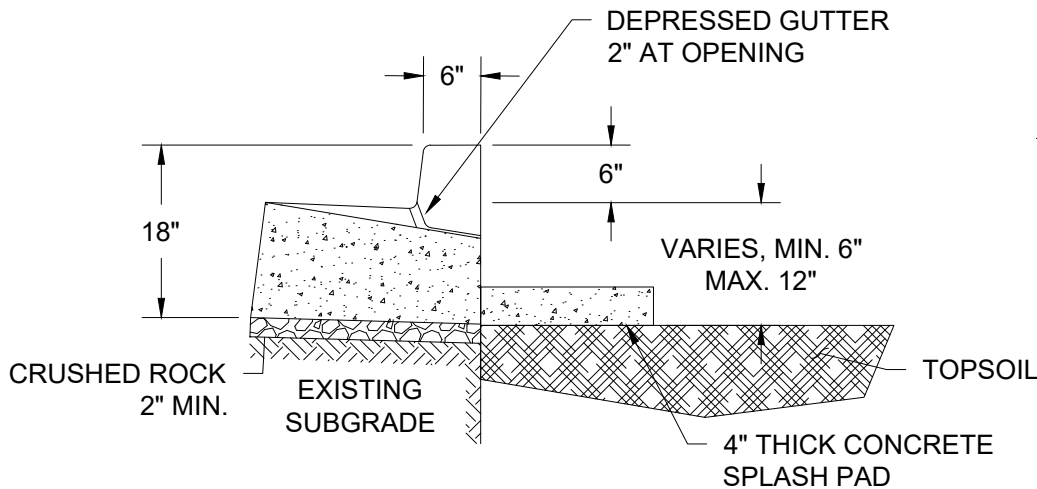
FILENAME: y:\inter-departmental\development engineering projects\public works standards\2.0 pws revision copy\details\gs_green streets\green street cad\gs-104a.dwg, Plotted 11/20/2025 2:12 PM, By: Anthony Dollowitch, ANSI FULL BLEED A (8.50 X 11.00 INCHES)



PLAN



ISOMETRIC



SECTION A-A

NOTES:

1. REFER TO GS-103 FOR THICKENED MONOLITHIC CURB AND GUTTER. IF PRESENT, MATCH GUTTER PAN WIDTH OF ADJACENT CURB AND GUTTER.
2. SEE CHECK DAM DETAIL GS-105 FOR DISTANCE TO TOP OF SPLASH PAD.
3. MAXIMUM DISTANCE BETWEEN INLETS SHALL BE 25 FEET.

NTS

CITY OF
GRESHAM

CONCRETE CURB INLET

PWS VERSION: JAN 2026

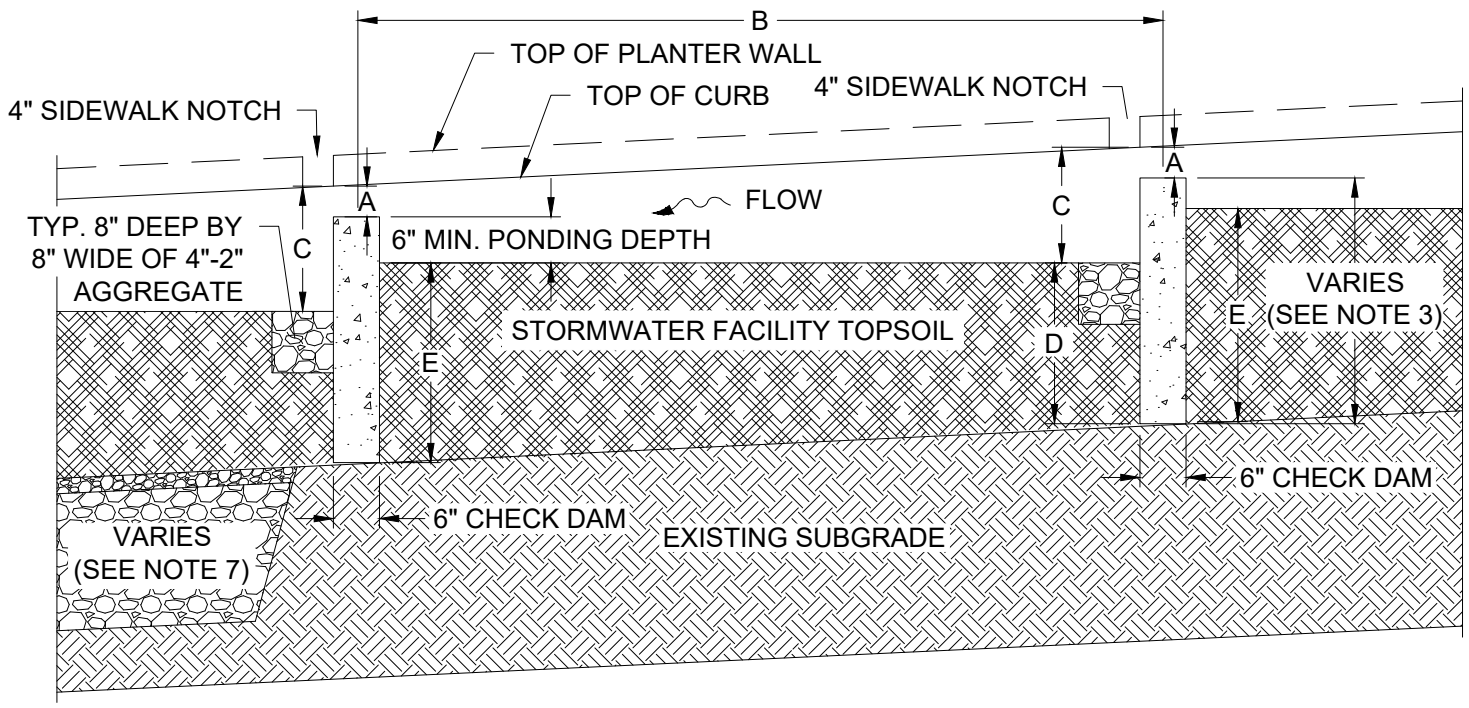
DRAWN KRB

REV. DEC 2024
DATE

APPR.

DETAIL NO. GS-104A

FILENAME: y:\inter-departmental\development engineering projects\public works standards\2.0 pws revision copy\details\gs_green streets\green street cad\gs-105.dwg, Plotted 11/20/2025 2:12 PM, By: Anthony Dollowitch, ANSI FULL BLEED A (8.50 X 11.00 INCHES)



SECTION C-C

ROAD GRADE	A (SEE NOTE 2)	MIN B	MAX B	C	D	E
>8%-15%	4"	5'	10'	18"	SEE GS-107 FOR DIMENSIONS	D + 8"
>4%-8%	5"	7.5'	15'	15"		D + 6"
0%-4%	6"	12.5'	25'	12"		D

NOTES:


- CHECK DAM TO BE PLACED ON UNDISTURBED NATIVE SOIL, OR ON AGGREGATE IF REQUIRED.
- TOP OF CHECK DAM SHALL BE A MINIMUM OF 1" BELOW THE UPSTREAM INLET GUTTERLINE ELEVATION.
- CHECK DAM WIDTH IS 6". HEIGHT VARIES DEPENDING ON ROAD GRADE.
- DIMENSION B VARIES BASED ON EQUAL SPACING REQUIREMENT ON GS-101.
- SIDEWALK DRAINAGE NOTCHES TO BE LOCATED IMMEDIATELY DOWNSTREAM OF EACH CHECK DAM.
- SIDEWALK NOTCH TO BE 1" LOWER THAN SIDEWALK AND SLOPED TO FACILITY. WIDTH IS 4" AND MINIMUM DEPTH 5" WHEN 4" TOE KICK PLANNED FOR.
- SEE GS-107 TO DETERMINE WHEN AGGREGATE AND UNDERDRAIN ARE REQUIRED.

NTS

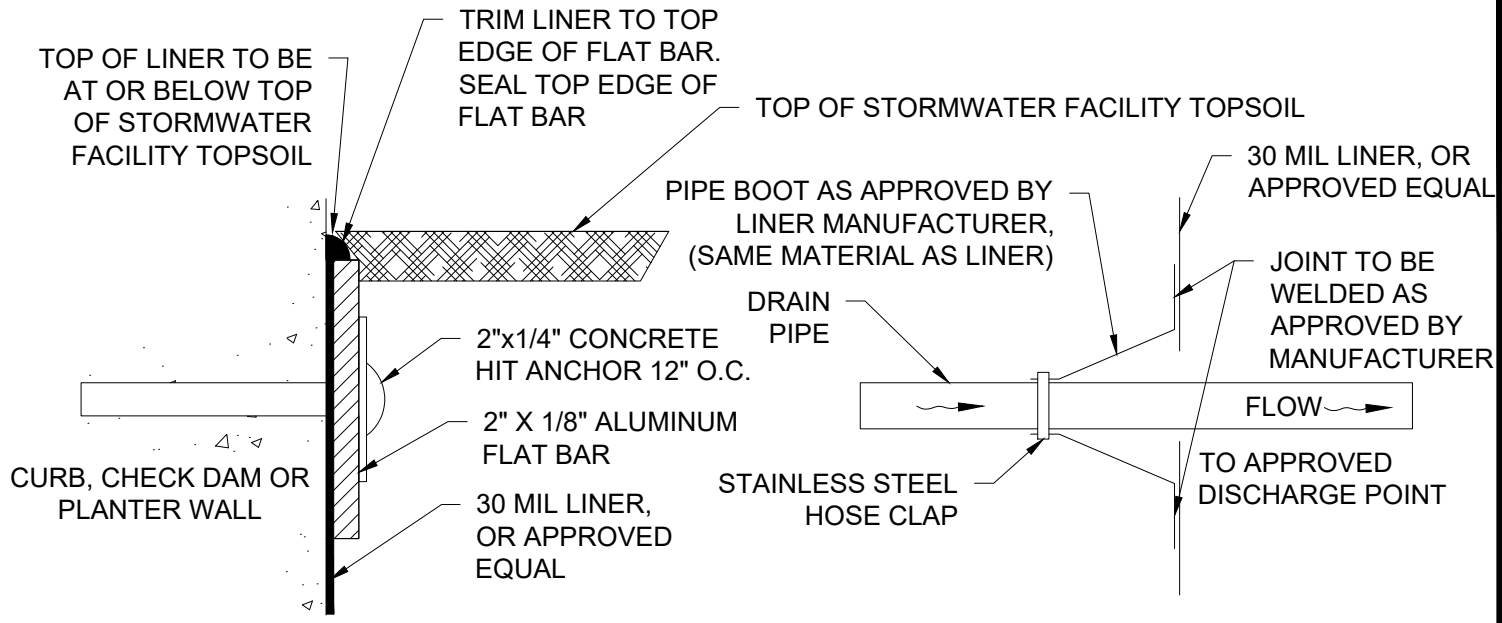
CITY OF
GRESHAM

CONCRETE CHECK DAM
FOR PLANTER

PWS VERSION: JAN 2026

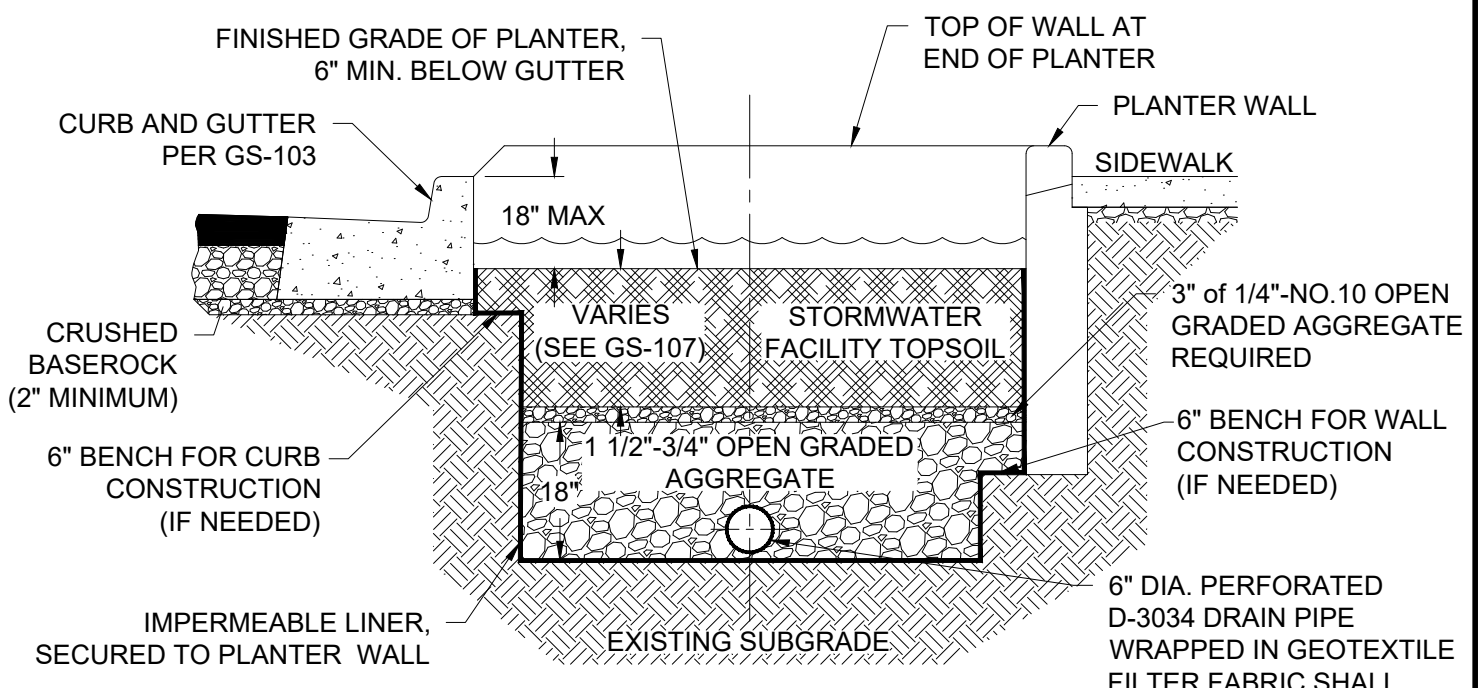
DRAWN	KRB
REV. DATE	JAN 2024
APPR.	
DETAIL NO.	GS-105

FILENAME: y:\inter-departmental\development engineering projects\public works standards\2.0 pws revision copy\details\gs_green streets\green street cad\gs-106.dwg, Plotted 11/20/2025 2:12 PM, By: Anthony Dollowitch, ANSI FULL BLEED A (8.50 X 11.00 INCHES)



LINER ATTACHMENT

PIPE BOOT



LINED PLANTER WITH UNDERDRAIN

NOTES:

1. MONOLITHIC CONCRETE ON SIDES AND BOTTOM PREFERRED OVER USE OF HDPE LINER.
2. FULL LINER REQUIRED IN HILLSIDE AND GEOLOGIC RISK OVERLAY DISTRICTS, CONTAMINATED SOILS, OR IN UNCONSOLIDATED FILL WITH OVERFLOW INTERCEPTED BY INLET TO STORMWATER SYSTEM. SEE GS-107.

NTS

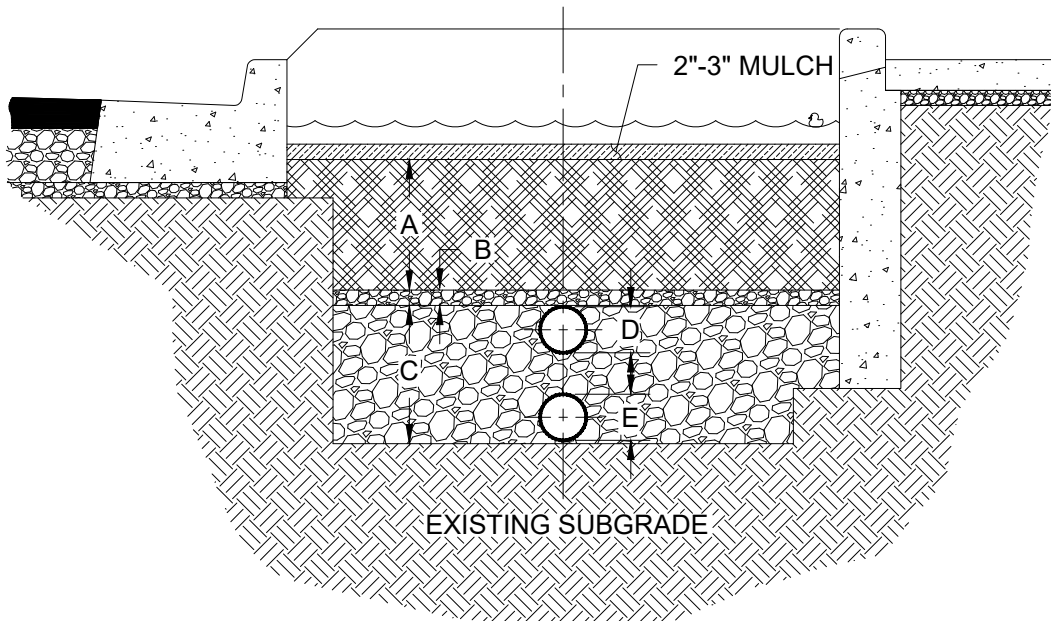
CITY OF
GRESHAM

LINER ATTACHMENT AND PIPE BOOT

PWS VERSION: JAN 2026

DRAWN	DRO
REV. DATE	OCT 2025
APPR.	
DETAIL NO.	GS-106

FILENAME: y:\inter-departmental\development engineering projects\public works standards\2.0 pws revision copy\details\gs_green streets\green street cad\gs-107.dwg, Plotted 11/20/2025 2:12 PM, By: Anthony Dollowitch, ANSI FULL BLEED A (8.50 X 11.00 INCHES)



CONDITION	A	B	C	D	E
GOOD INFILTRATING SOILS (>2"/hr)	12" (MIN) TOPSOIL	0"	0"	NA	NA
LOW INFILTRATING SOILS (0.5 to 2"/hr)	18" (MIN) TOPSOIL	0"	0"	NA	NA
POOR INFILTRATING SOILS (<0.5"/hr)	24" (MIN) TOPSOIL	3" OF 1/4"-NO. 10 OPEN GRADED AGGREGATE	18" MIN. 1 1/2"-3/4" OPEN GRADED AGGREGATE	6" PERF PIPE	NA
LINED FACILITIES	24" (MIN) TOPSOIL	3" OF 1/4"-NO. 10 OPEN GRADED AGGREGATE	18" MIN. 1 1/2"-3/4" OPEN GRADED AGGREGATE	NA	6" PERF PIPE

NOTES:

1. SEE STORMWATER MANAGEMENT MANUAL FOR DETAILS ON STORMWATER FACILITY TOPSOIL SPECIFICATIONS.
2. MINIMUM DEPTH FOR A IS 12 INCHES. SEE GS-105 TO DETERMINE DEPTHS FOR SLOPED FACILITIES.
3. LINED FACILITIES ONLY ALLOWED FOR STEEP SLOPES (>20%), UNCONSOLIDATED FILL (WITH SLOPES OR LOW INFILTRATION SOILS) OR IN CONTAMINATED SOILS, SEE GS-106 FOR DETAILS ON LINED FACILITIES.
4. TREES INCLUDED IN PLANTERS MUST FOLLOW GS-112. TREES ARE NOT ALLOWED IN LINED FACILITIES OR TO HAVE ROCK OR UNDERDRAIN UNDER PORTIONS OF THE FACILITY WHERE TREES WILL BE PLANTED.
5. MAXIMUM LENGTH OF PERFORATED PIPE IS 36 INCHES.

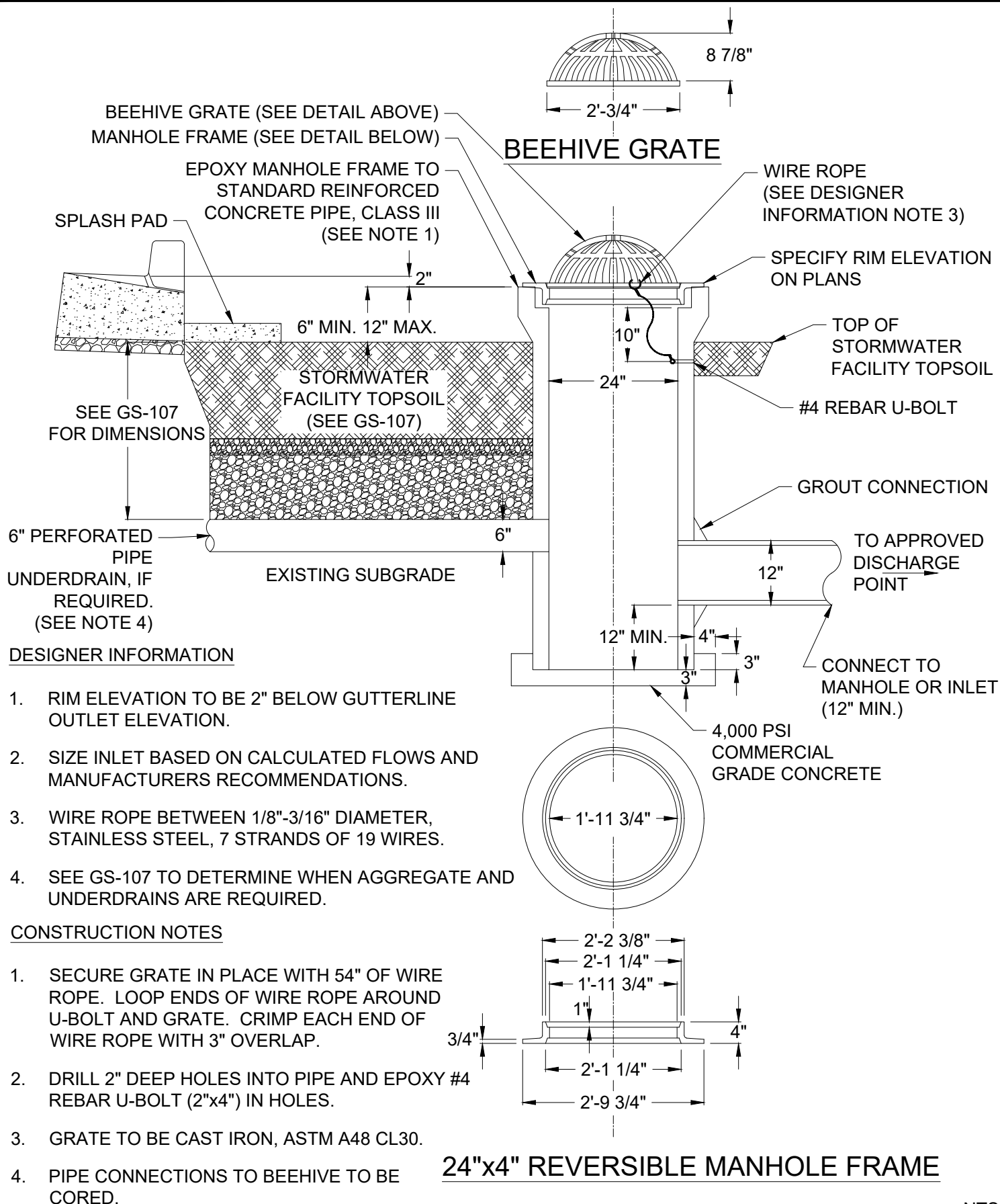
NTS

CITY OF
GRESHAM

UNDERDRAIN AND ROCK REQUIREMENTS

PWS VERSION: JAN 2026

DRAWN	DRO
REV. DATE	NOV 2024
APPR.	
DETAIL NO.	GS-107



NTS

CITY OF
GRESHAM

BEEHIVE OVERFLOW

PWS VERSION: JAN 2026

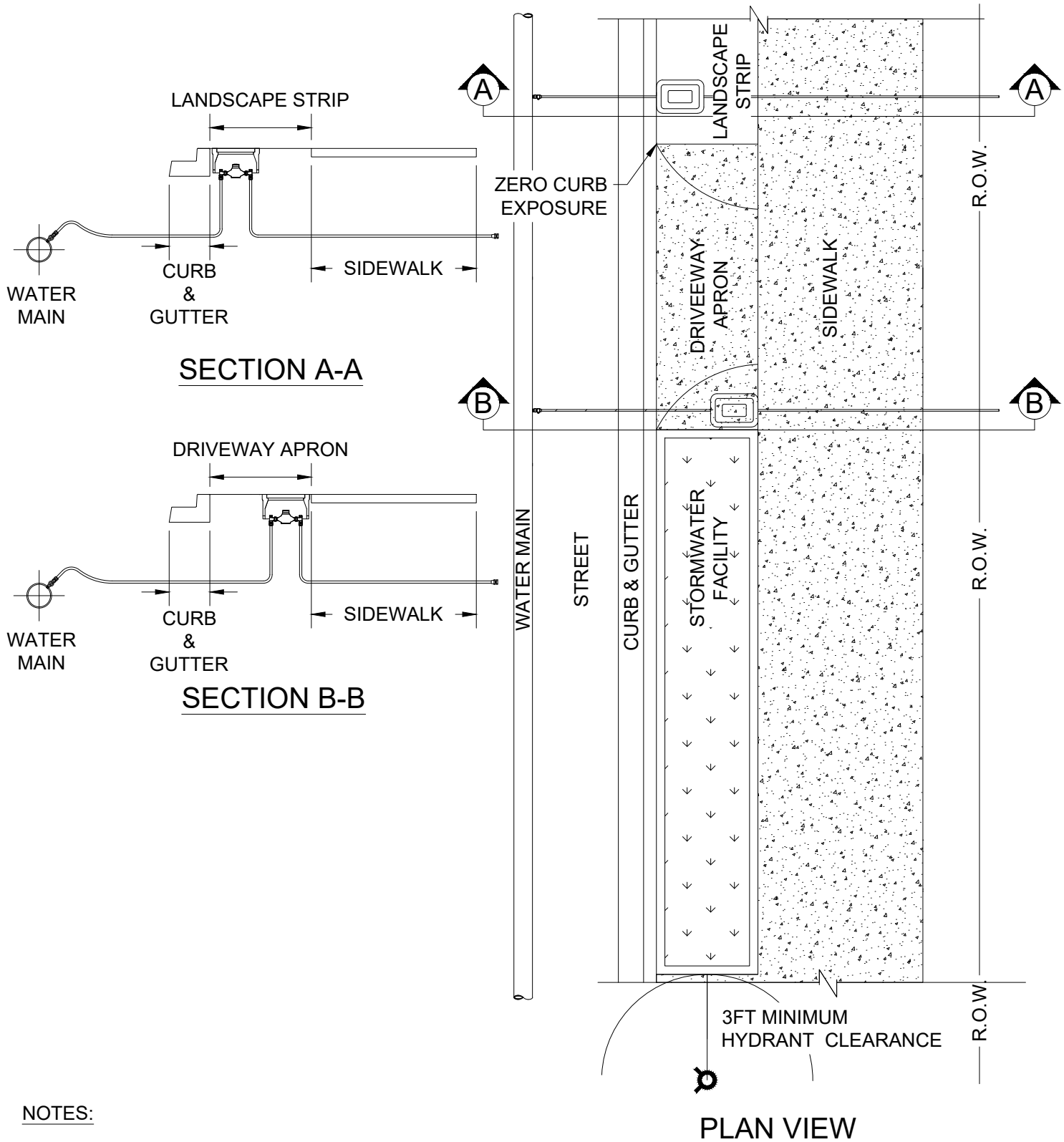
DRAWN DRO

REV. DATE **AUG 2025**

APPR.

DETAIL NO. **GS-108**

FILENAME: y:\inter-departmental\development engineering projects\public works standards\2.0 pws revision copy\details\gs_green streets\green street cad\gs-109.dwg, Plotted 11/20/2025 2:12 PM, By: Anthony Dollowitch, ANSI FULL BLEED A (8.50 X 11.00 INCHES)



NOTES:


1. REFER TO FIRE HYDRANT ASSEMBLY STANDARD DETAIL 501A. HYDRANTS MUST HAVE MIN 3FT CLEARANCE FROM THE EDGE OF STORMWATER FACILITY.
2. REFER TO 1" SERVICE ASSEMBLY, STANDARD DETAIL 502.

NTS

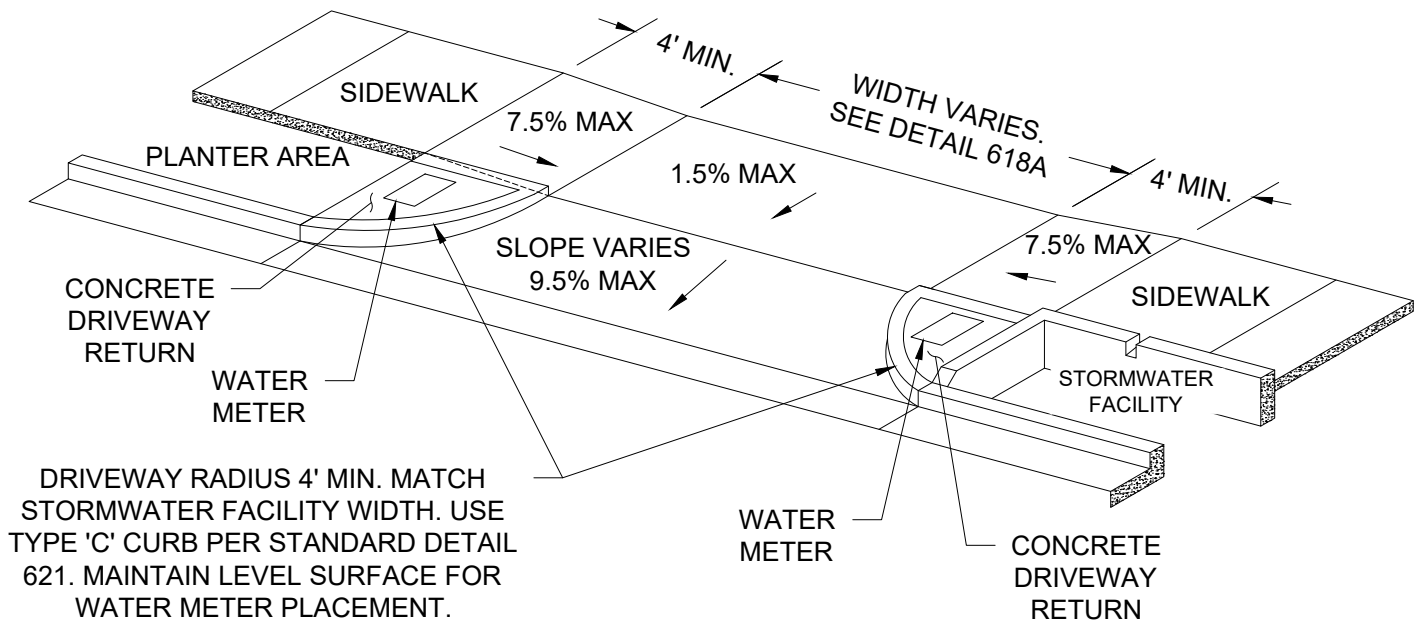
CITY OF
GRESHAM

STORMWATER FACILITY, METER AND
HYDRANT LOCATIONS

PWS VERSION: JAN 2026

DRAWN	KRB
REV. DATE	JAN 2019
APPR.	
DETAIL NO.	GS-109

FILENAME: y:\inter-departmental\development engineering projects\public works standards\2.0 pws revision copy\details\gs_green streets\green street cad\gs-110.dwg, Plotted 11/20/2025 2:12 PM, By: Anthony Dollowitch, ANSI FULL BLEED A (8.50 X 11.00 INCHES)



NOTES:

1. SIDEWALK WIDTH VARIES WITH STREET CLASSIFICATION. SEE STANDARD STREET CROSS SECTIONS. (5' MINIMUM)
2. STORMWATER FACILITY WIDTH VARIES. SEE STANDARD STREET CROSS SECTIONS. (4' MINIMUM)
3. CURB RADIUS SHALL MATCH STORMWATER FACILITY WIDTH. SEE STANDARD STREET CROSS SECTIONS.
4. SLOPES SHOWN ARE RELATIVE TO HORIZONTAL. TRANSITION RAMP SHALL BE 7.5% MAX SLOPE OR 15' IN LENGTH.
5. ALL CONCRETE SURFACES SHALL BE LIGHTLY BROOMED AND EDGED IN A WORKMANLIKE MANNER.
6. SAW CUT EXISTING CURBS WHERE THEY ARE TO BE REMOVED - IF LESS THAN 3' TO EXISTING JOINT, REMOVE TO JOINT. EXISTING ASPHALT IN FRONT OF THE APPROACH SHALL BE SAW CUT AND REPLACED WITH HOT MIX.
7. CONCRETE SHALL BE 4,000 PSI AT 28 DAYS.
8. WATER METER LIDS IN CONCRETE DRIVEWAY RETURN SHALL BE TRAFFIC RATED.
9. CONCRETE DEPTH AND ROCK SECTION SHALL BE PER STANDARD DETAIL 618A.

NTS

CITY OF
GRESHAM

STORMWATER FACILITY RESIDENTIAL
DRIVEWAY APPROACH

PWS VERSION: JAN 2026

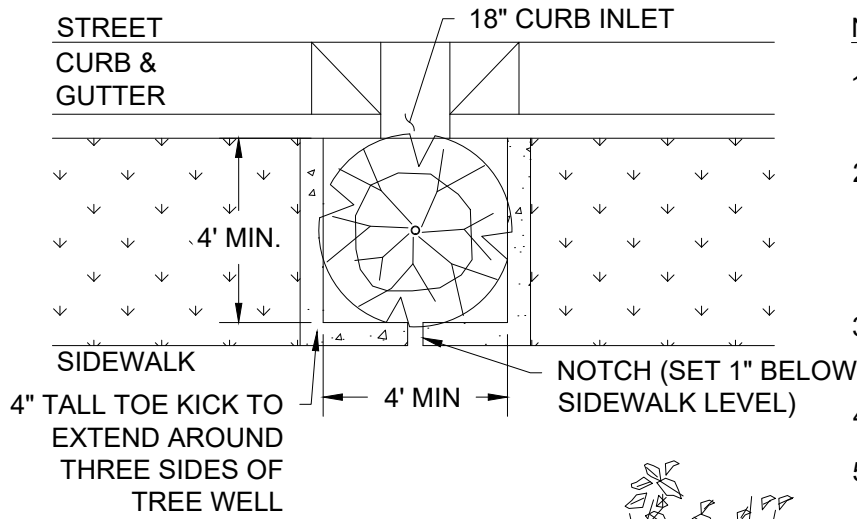
DRAWN KRB

REV. JAN 2024
DATE

APPR. 

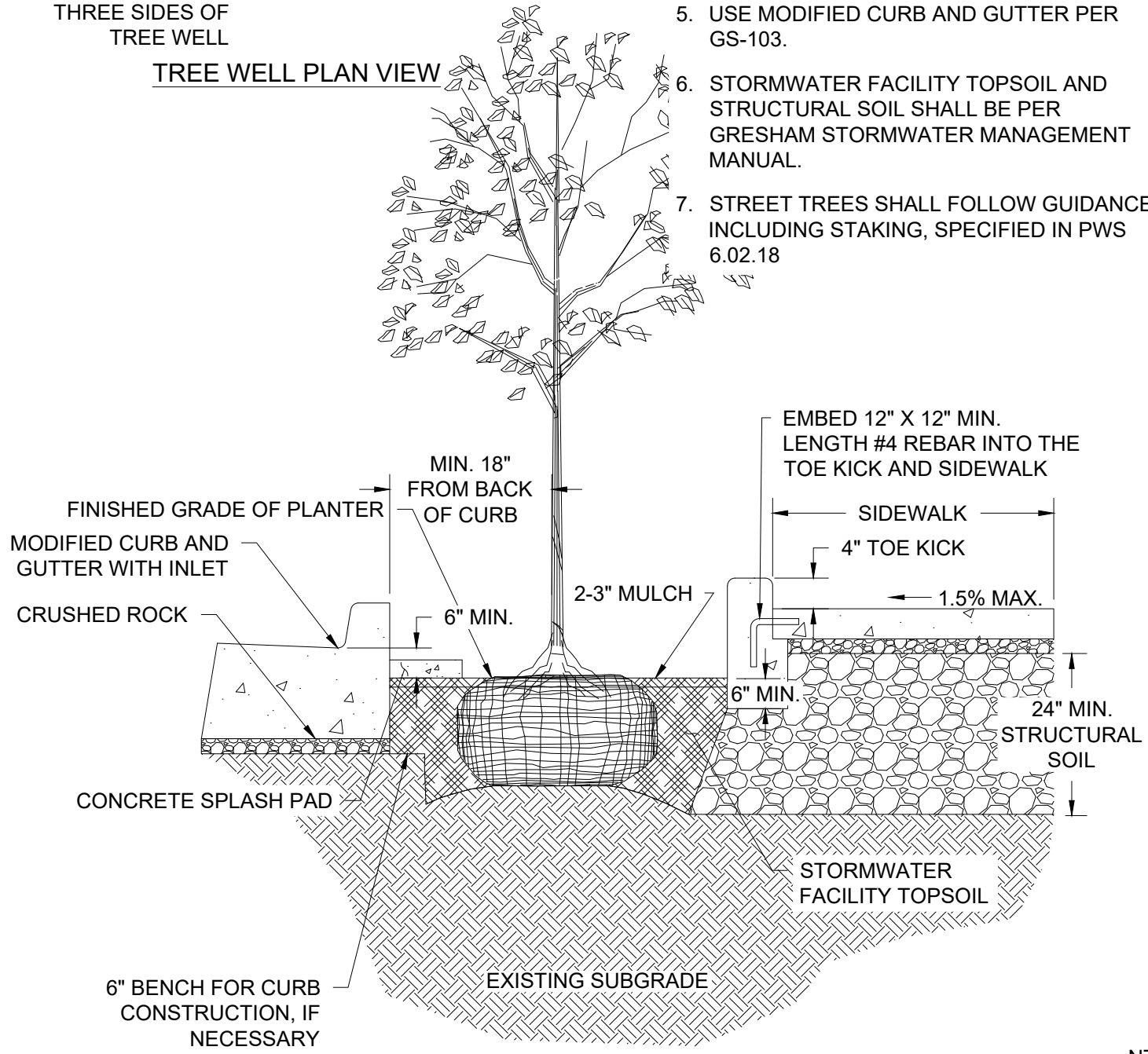
DETAIL NO. GS-110

FILENAME: y:\inter-departmental\development engineering projects\public works standards\2.0 pws revision copy\details\gs_green streets\green street cad\gs-111.dwg, Plotted 11/20/2025 2:12 PM, By: Anthony Dollowitch, ANSI FULL BLEED A (8.50 X 11.00 INCHES)



TREE WELL PLAN VIEW

- NOTES:**
1. REMOVE WIRE AND BURLAP FROM ROOT BALL PRIOR TO BACKFILLING.
 2. PLANT TREE ON PEDESTAL OF NATIVE SOIL. ADJUST HEIGHT AS NEEDED TO SET TOP OF ROOT BALL A MINIMUM OF 1"-2" ABOVE TOPSOIL SURFACE.
 3. SET ONE "DRAINS TO RIVER" BUTTON INTO CURB BEFORE CONCRETE HAS DRIED.
 4. SEE GS-104 FOR CURB INLET DETAILS.
 5. USE MODIFIED CURB AND GUTTER PER GS-103.
 6. STORMWATER FACILITY TOPSOIL AND STRUCTURAL SOIL SHALL BE PER GRESHAM STORMWATER MANAGEMENT MANUAL.
 7. STREET TREES SHALL FOLLOW GUIDANCE, INCLUDING STAKING, SPECIFIED IN PWS 6.02.18



NTS

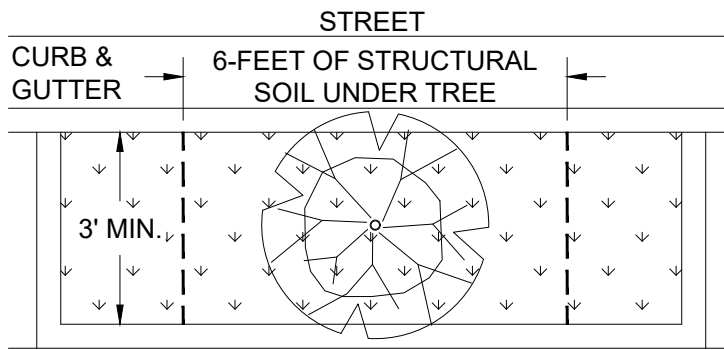


STORMWATER TREE WELL WITH STRUCTURAL SOIL

PWS VERSION: JAN 2026

DRAWN	AAD
REV. DATE	NOV 2025
APPR.	
DETAIL NO.	GS-111

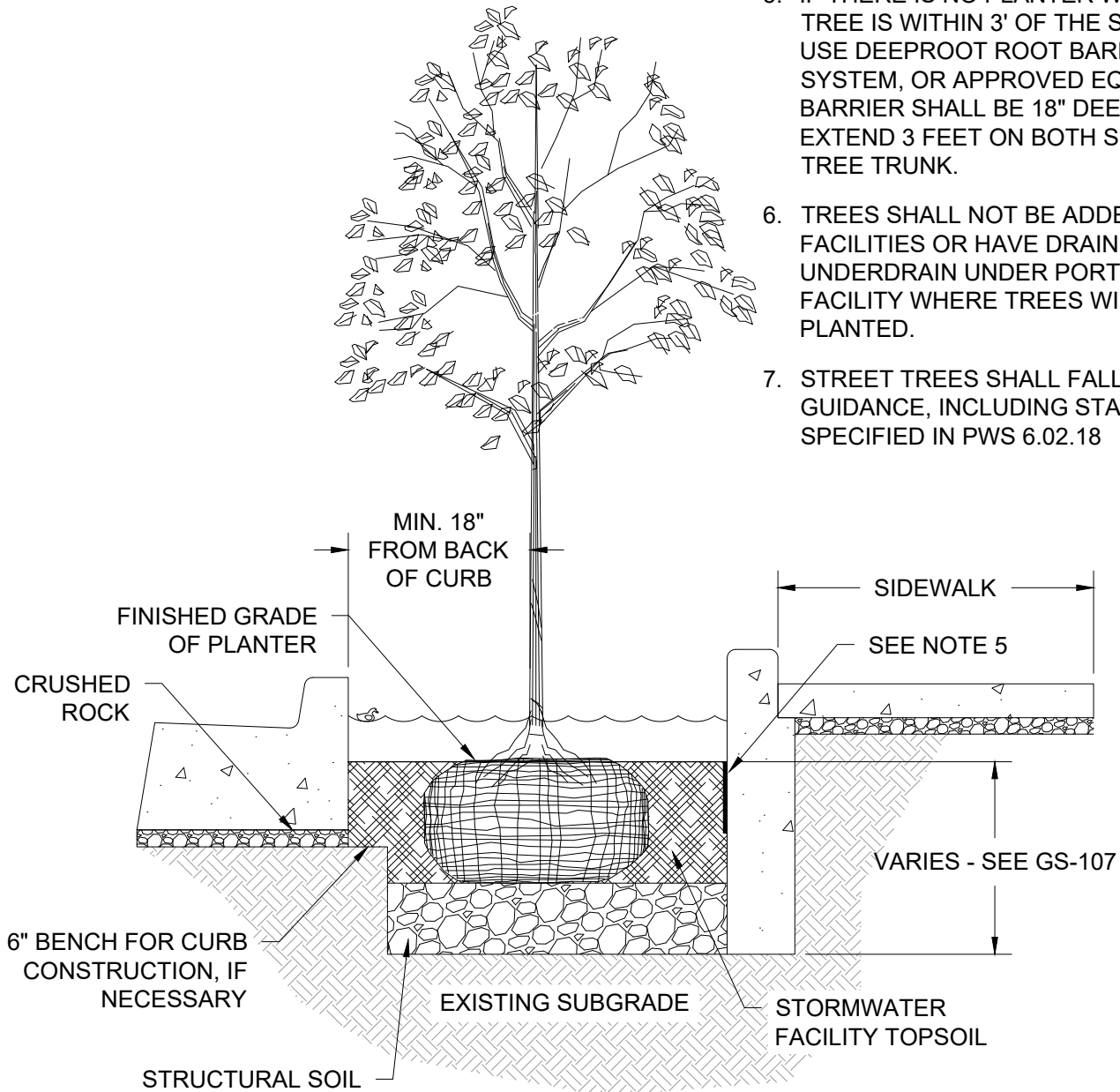
FILENAME: y:\inter-departmental\development engineering projects\public works standards\2.0 pws revision copy\details\gs_green streets\green street cad\gs-112.dwg, Plotted 11/20/2025 2:12 PM, By: Anthony Dollowitch, ANSI FULL BLEED A (8.50 X 11.00 INCHES)



SIDEWALK
STORMWATER PLANTER PLAN VIEW

NOTES:

1. TREES MUST BE SELECTED FROM LIST OF APPROVED STORMWATER TREES, UNLESS APPROVED BY THE CITY.
2. REMOVE WIRE AND BURLAP FROM ROOT BALL PRIOR TO BACKFILLING.
3. SET TOP OF ROOT BALL A MINIMUM OF 1"-2" ABOVE TOPSOIL SURFACE.
4. 3FT MINIMUM WIDTH FOR PLANTERS WITH TREES.
5. IF THERE IS NO PLANTER WALL AND THE TREE IS WITHIN 3' OF THE SIDEWALK, USE DEEPROOT ROOT BARRIER SYSTEM, OR APPROVED EQUAL. ROOT BARRIER SHALL BE 18" DEEP AND EXTEND 3 FEET ON BOTH SIDES OF THE TREE TRUNK.
6. TREES SHALL NOT BE ADDED TO LINED FACILITIES OR HAVE DRAIN ROCK OR UNDERDRAIN UNDER PORTIONS OF THE FACILITY WHERE TREES WILL BE PLANTED.
7. STREET TREES SHALL FOLLOW GUIDANCE, INCLUDING STAKING, SPECIFIED IN PWS 6.02.18



NTS

CITY OF
GRESHAM

STREET TREE PLANTING WITHIN
STORMWATER PLANTER

PWS VERSION: JAN 2026

DRAWN KRB

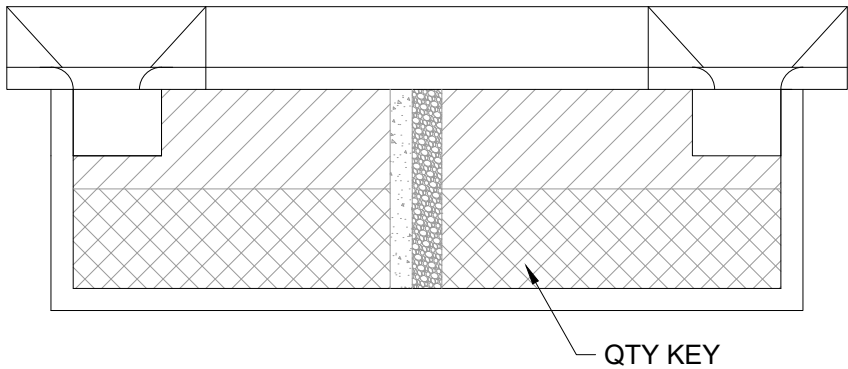
REV. NOV 2025
DATE

APPR.

DETAIL NO. GS-112

FILENAME: y:\inter-departmental\development engineering projects\public works standards\2.0 pws revision copy\details\gs_green streets\green street cad\gs-113.dwg, Plotted 11/20/2025 2:12 PM, By: Anthony Dollowitch, ANSI FULL BLEED A (8.50 X 11.00 INCHES)

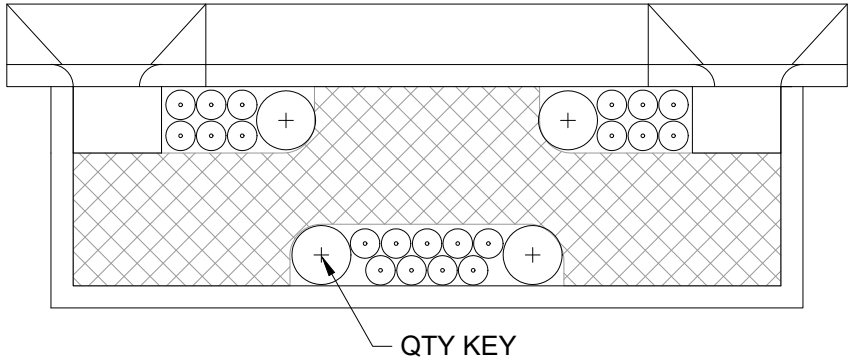
TEMPLATE 1



PLANT LEGEND 1

SYMBOL	BOTANICAL NAME
	COMMON NAME
	JUNCUS PATENS SPREADING RUSH
	CAREX OBNUPTA SLOUGH SEDGE

TEMPLATE 2



PLANT LEGEND 2

SYMBOL	BOTANICAL NAME
	COMMON NAME
	JUNCUS PATENS SPREADING RUSH
	CAREX OBNUPTA SLOUGH SEDGE
	SPIRAEA JAPONICA 'GOLD MOUND' GOLDMOUND JAPANESE SPIREA

SAMPLE PLANTING LEGEND

SYMBOL	BOTANIC NAME	COMMON NAME	SPACING	SQ. FOOT AREA =	X
				SPACING	QTY.
	Xxxxxx xxxxx	xxxxx	X	X	X
	Xxxxxx xxxxx	xxxxx	X	X	X

INSTRUCTIONS:

1. CHOOSE A TEMPLATE AND ALTER IT TO DESIGN. THESE ARE EXAMPLES OF APPROVED PLANTING TEMPLATES. OTHER PLANTING PLANS MAY BE APPROVED.
2. PLANT LISTS AND ON-CENTER SPACING REQUIREMENTS ARE FOUND IN THE STORMWATER MANAGEMENT MANUAL.
3. PLANTING LEGEND REQUIRED. STATE PLANT SPECIES, SPACING, AND QUANTITIES.
4. PLANTING PLANS SHALL INCLUDE LABELS FOR EACH PLANT GROUP IDENTIFYING THE PLANT SPECIES AND QUANTITY IN THE GROUP.

- DRAWING NOT TO SCALE -
ORIGINAL DRAWING AND SPECIFICATIONS FROM PORTLAND BUREAU OF ENVIRONMENTAL SERVICES

PUBLISHED: JAN 2026

PUBLIC FACILITY LANDSCAPING TEMPLATE

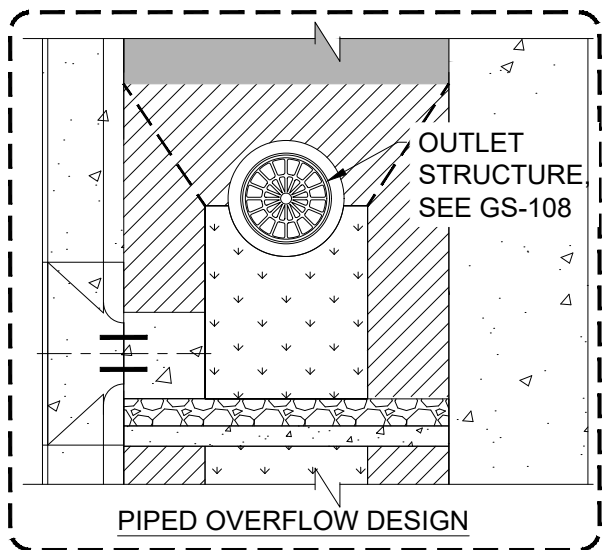
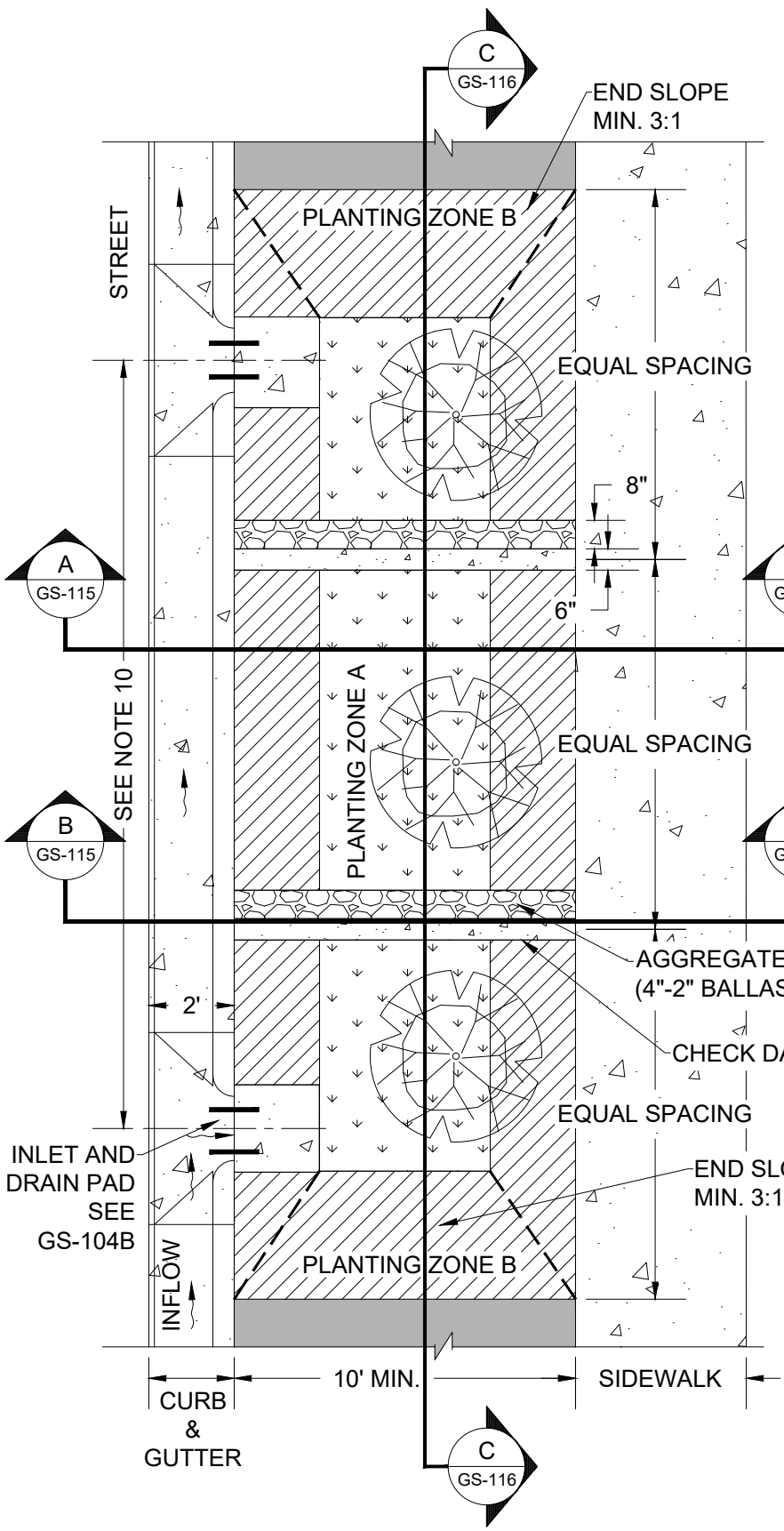
DRAWN DRO

REV. DATE APR 2018

APPR.

DETAIL NO. GS-113

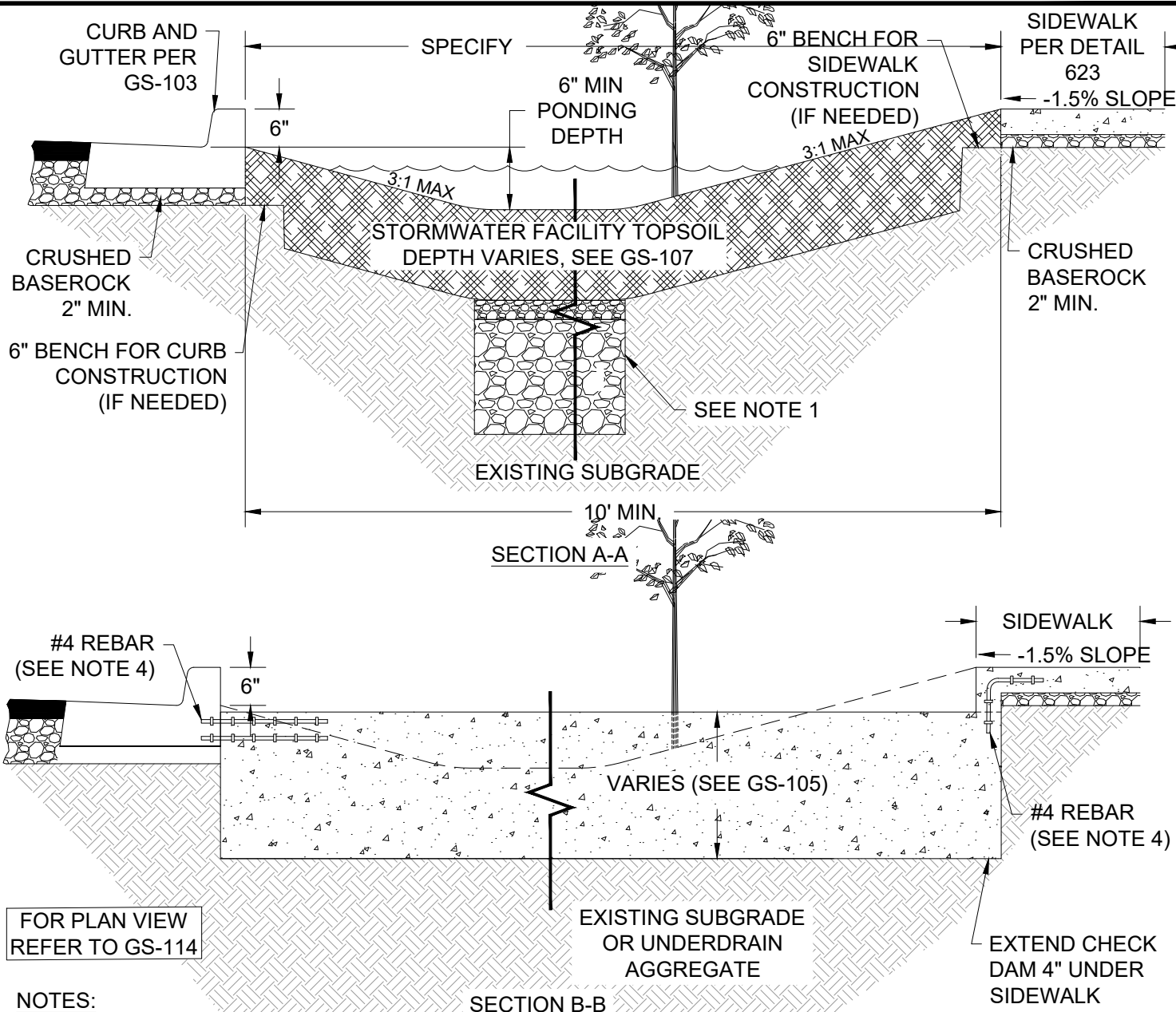
FILENAME: y:\inter-departmental\development engineering projects\public works standards\2.0 pws revision copy\details\gs_green streets\green street cad\gs-114.dwg, Plotted 11/20/2025 2:12 PM, By: Anthony Dollowitch, ANSI FULL BLEED A (8.50 X 11.00 INCHES)



- NOTES:**
1. SPECIFIC FACILITY DIMENSIONS MUST BE SHOWN ON STORMWATER UTILITY PLAN.
 2. LONGITUDINAL SLOPE OF SWALE SHALL MATCH ROAD, UNLESS CHECK DAMS ARE USED, SEE GS-116 FOR CHECK DAM REQUIREMENTS.
 3. PROVIDE STATIONS AND ELEVATIONS AT EVERY INLET, OUTLET, AND CHECK DAM.
 4. SIDEWALK ELEVATION MUST BE SET ABOVE INLET AND OUTLET ELEVATIONS TO ALLOW OVERFLOW TO DRAIN TO STREET BEFORE SIDEWALK.
 5. SEE SHEET GS-104B FOR INLET DETAILS.
 6. ANY ADDITIONAL INLETS SHALL BE LOCATED ON DOWNSTREAM SIDE OF CHECK DAMS.
 7. SPECIAL REQUIREMENTS FOR WATER LINES, METERS, AND FIRE HYDRANTS, SEE SHEET GS-109 FOR DETAILS.
 8. SEE GRESHAM STORMWATER MANAGEMENT MANUAL FOR STORMWATER FACILITY TOPSOIL REQUIREMENTS.
 9. SEE GRESHAM STORMWATER MANAGEMENT MANUAL FOR PLANTING GUIDANCE.
 10. MAX SPACING BETWEEN INLETS SHALL BE 50' WHEN ROAD GRADE IS LESS THEN 2%. MAX 25' WHEN ROAD GRADE IS GREATER THEN 2%

CITY OF GRESHAM	SWALE PLAN VIEW	DRAWN AAD
		REV. DATE NOV 2025
		APPR.
		DETAIL NO. GS-114

PWS VERSION: JAN 2026



- | NOTES: | SECTION B-B | SIDEWALK |
|---|-------------|----------|
| 1. SEE GS-107 TO DETERMINE WHEN AGGREGATE AND UNDERDRAINS ARE REQUIRED. WHEN REQUIRED, AGGREGATE ONLY NEEDS TO BE IN THE MIDDLE PORTION OF THE SWALE. | | |
| 2. FRACTURE AND LOOSEN THE NATIVE SOIL FOLLOWING INITIAL EXCAVATION AND BEFORE INSTALLING TOPSOIL OR ROCK. | | |
| 3. STORMWATER FACILITY TOPSOIL SHALL BE PER THE CITY'S STORMWATER MANAGEMENT MANUAL. | | |
| 4. EMBED OR EPOXY SET A 12" MIN. LENGTH #4 REBAR BETWEEN CHECK DAM AND CURB AND SIDEWALK. | | |
| 5. TREES PLANTED IN SWALE SHALL BE CENTERED BETWEEN CURB AND SIDEWALK, OR SHIFTED BACK TOWARDS SIDEWALK SLIGHTLY. PLACE ROOT BALL ON NATIVE SOIL AND ENSURE TOP OF ROOT BALL IS 1-2" ABOVE FINAL TOPSOIL ELEVATION. | | |
| 6. SIDEWALK ELEVATION MUST BE EQUAL TO OR HIGHER THAN TOP OF CURB TO ENSURE WATER OVERFLOWS TO GUTTER. | | |
| 7. STREET TREES SHALL FOLLOW GUIDANCE, INCLUDING STAKING, SPECIFIED IN PWS 6.02.18. | | NTS |

NTS

CITY OF
GRESHAM

SWALE SECTION VIEW

PWS VERSION: JAN 2026

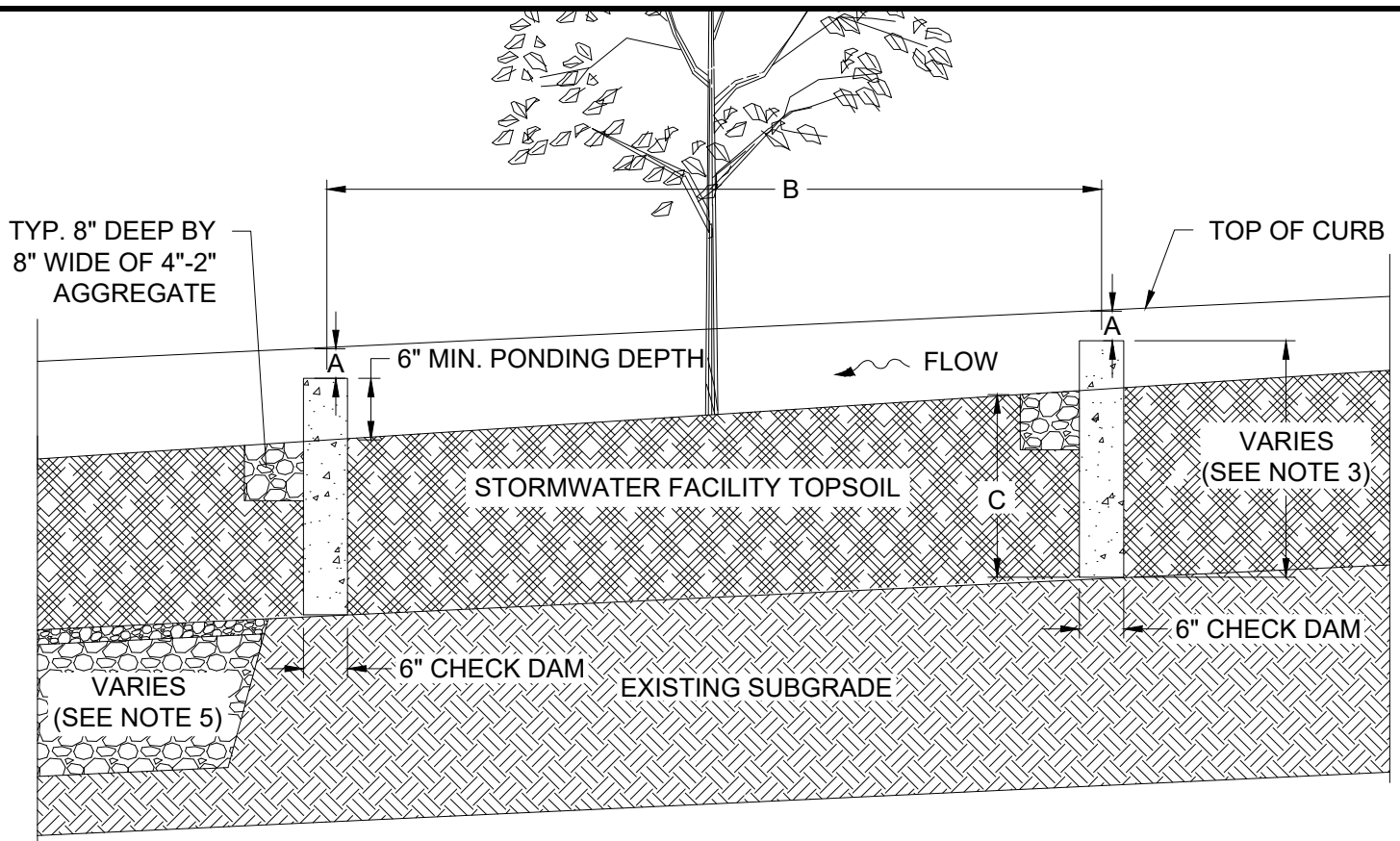
DRAWN AAD

REV. NOV 2025
DATE

APPR.

DETAIL NO. **GS-115**

FILENAME: y:\inter-departmental\development engineering projects\public works standards\2.0 pws revision copy\details\gs_green streets\green street cad\gs-116.dwg, Plotted 12/2/2025 4:11 PM, By: Anthony Dolowich, ANSI FULL BLEED A (8.50 X 11.00 INCHES)



SECTION C-C

ROAD * GRADE	A (SEE NOTE 2)	MIN B	MAX B	C
>8%-10%	4"	5'	10'	SEE GS-107 FOR DIMENSIONS
>4%-8%	5"	7.5'	15'	
2%-4%	6"	12.5'	25'	

* ROADS 0-2% DO NOT REQUIRE CHECK DAMS

** DIMENSION B VARIES BASED ON EQUAL SPACING
REQUIREMENT ON GS-114

NOTES:

- CHECK DAM TO BE PLACED ON UNDISTURBED NATIVE SOIL, OR ON UNDERDRAIN AGGREGATE IF REQUIRED.
- TOP OF CHECK DAM SHALL BE A MINIMUM OF 1" BELOW THE UPSTREAM INLET GUTTERLINE ELEVATION.
- CHECK DAM WIDTH IS 6". HEIGHT VARIES DEPENDING ON ROAD GRADE.
- SEE GS-107 TO DETERMINE WHEN AGGREGATE AND UNDERDRAIN ARE REQUIRED.

NTS

CITY OF
GRESHAM

CONCRETE CHECK DAM
FOR SWALE

PWS VERSION: JAN 2026

DRAWN AAD

REV.
DATE NOV 2025

APPR. 

DETAIL NO. GS-116