

The background is a solid dark green. On the left side, there is a stylized illustration of a forest. It includes several coniferous trees in white and light green, and a larger deciduous tree with a thick white trunk and a large, rounded green canopy. At the base of the trees are some dark green bushes and two small white flowers with yellow centers. Scattered across the right side of the slide are several individual green leaves of different shapes and sizes.

Tree Code Update Project

Coalition of Gresham Neighborhood Associations
March 11, 2025

Mary Phillips, Senior Planner
Gabby Sinagra, Planner 2

CITY OF GRESHAM



Tonight's Agenda

1

Project Update

- Project Overview and Progress
- Background Refresher
 - Existing Conditions
 - Community Goals

2

Policy Framework

- Key Policy Approaches
- Discussion





Project Overview

Project Vision

Gresham has a thriving and equitably distributed tree canopy that supports climate resiliency and healthy living.

Project Scope

- Include high levels of community engagement.
- Update City's tree goals, policies, procedures, & regulations.
- Update to Volumes 1-3 of Community Development Plan.
- Updated tree lists and creation of City Tree Guidebook(consultant).





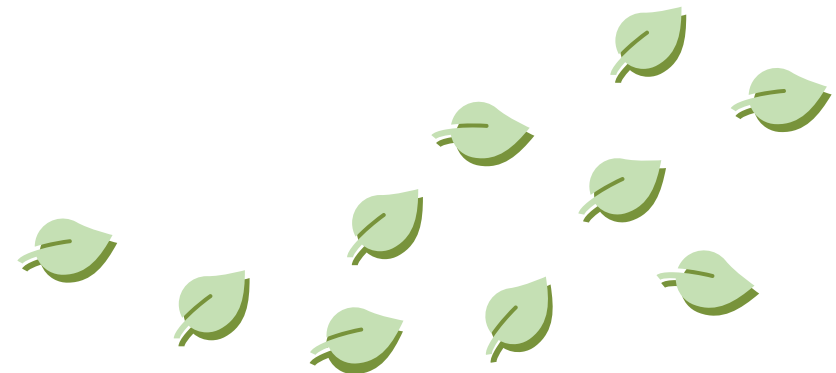
Project Overview

Phase 1: Project Outline and Background Analysis	Phase 2: Goal Setting	Phase 3: Alternatives	Phase 4: Policy Development	Phase 5: Adoption	Phase 6: Implementation
<i>Fall 2023–Winter 2024</i>	<i>Spring/Summer 2024</i>	<i>Winter/Spring 2025</i>	<i>Winter/Spring 2025</i>	<i>~Late Summer 2025</i>	<i>~Late Summer 2025 +</i>
<ul style="list-style-type: none">• Outline project• Background Analysis• Peer Review• Equity Lens Tool• Plan for Public Involvement	<ul style="list-style-type: none">• Visioning• Community Outreach• Draft Outcome Goals• Finalize goals and scope	<ul style="list-style-type: none">• Develop Alternatives• Alternatives Analysis• Preferred Alternative	<ul style="list-style-type: none">• Policy Development• Review Draft Policies• Refine Draft Policies	<ul style="list-style-type: none">• Public Hearings	<ul style="list-style-type: none">• Policy enactment• Ongoing implementation



Neighborhood Coalition Feedback Summary

- Tree guidebook should prioritize education
- Plant trees where they aren't
- Right tree right place
- Canopy target goal is needed in the City
- Prioritize preservation of mature trees/stands/groves and their benefits
- Address storm and heat impacts
- Mitigation should consider equivalent environmental benefits
- Consider wildfire mitigation
- Stricter enforcement is needed for tree removal





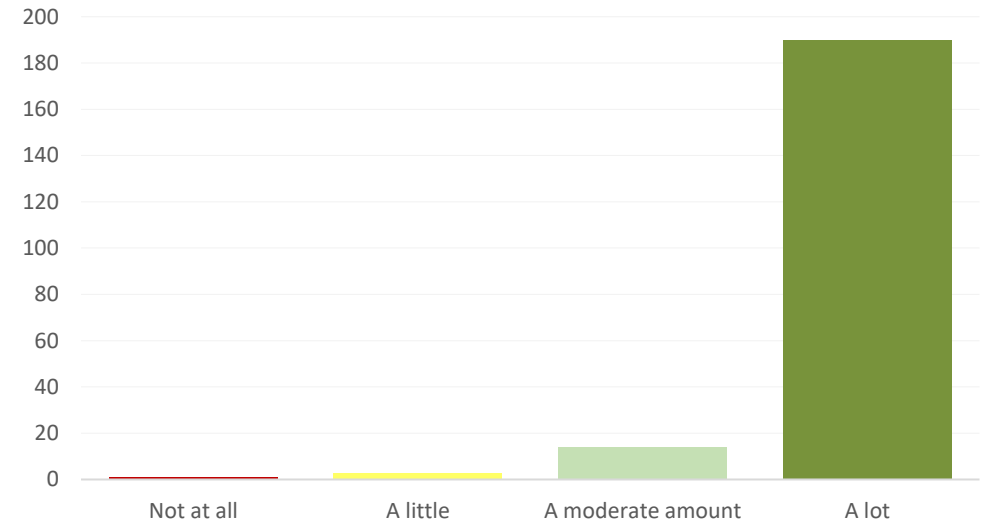
Community Priorities Feedback

The Community Clearly Values Having Trees.

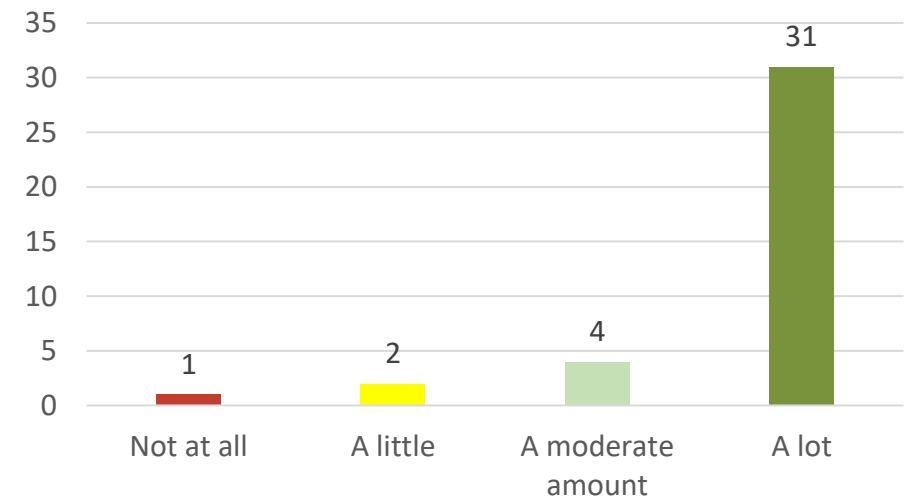
A lot.

How much do you value having trees in our city?

Survey Results:



Work Session Feedback:





Community Priorities Feedback Summary

The Community Wants:

- **Protection of mature trees and mature tree groves**
- **Regulations that promote a variety of both building size and tree size**
- **Plentiful or dense tree coverage throughout the City**





Community Priorities Feedback Summary

Tree Policies Should:

- Reduce urban heat
- Improve air quality
- Support healthy living
- Provide habitat for wildlife
- Enhance community vibrancy





Community Priorities Feedback Summary

Most Common Tree Concerns:

- Lack of clarity on who is responsible for tree care or planting
- Tree and infrastructure conflicts (damage to sidewalks, blocked signs, etc.)
- Safety hazards (dropped limbs in storms, street signals, etc.)
- Inappropriate tree pruning, maintenance, or removal



Policy Alternatives and Framework



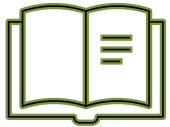


Alternatives: Comp Plan



City Tree Guidebook

- Supporting document to regulations
- Details on planting, preservation, maintenance, etc.



Volume 1: Community Development Plan Findings

- Update findings to incorporate community feedback and recent project work
- Consolidate existing information



Volume 2: Community Development Policies

- Update urban forest goals, policies, and action measures
- Reorganization to reflect key policy topics



Volume 3: Development Code

- Based on policy framework



Policy Framework



Canopy Policy

- Citywide canopy goal
- Subareas goal

Retention Policy

- Challenging but achievable preservation standard
- Prioritize important individual tree retention

Replacement & Mitigation Policy

- Require medium replacement rates
- Replacement based on canopy coverage

Enforcement Policy

- Tiered enforcement





Policy Framework : Canopy



Policy Purpose

- Goal for citywide canopy
- Goals for subareas
- Outcomes for regulations

Related Community Feedback

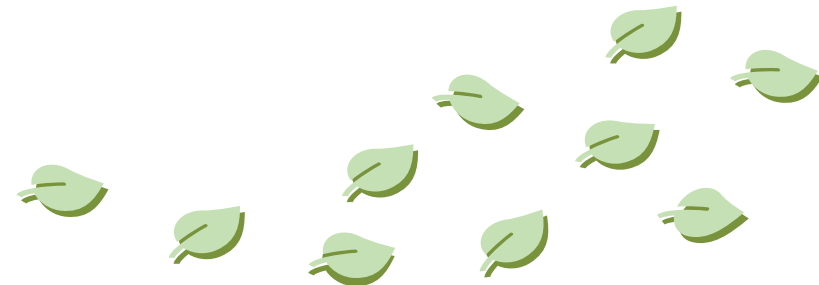
- “Plentiful” or “dense” tree coverage
- Higher coverage in residential neighborhoods

Policy Considerations

- 30% canopy coverage = health benefits
- 40% canopy coverage = heat benefits

Policy Approach

- Long-term targets
- Equitable distribution
- Context sensitive





Policy Framework : Tree Retention



Policy Purpose

- Establish preservation minimums
- Maintain existing canopy

Related Community Feedback

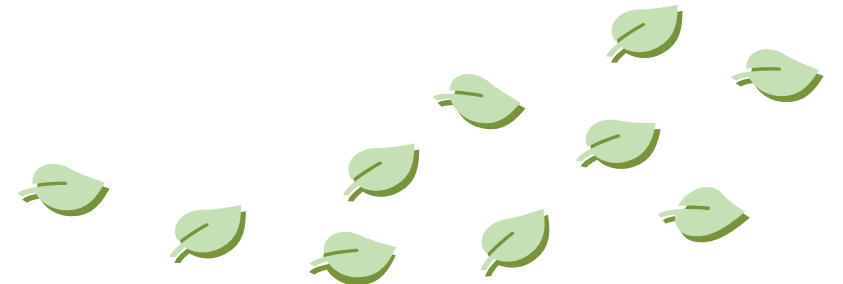
- 97% of community respondents report valuing trees “a lot”
- Community wants regulations that protect mature trees and groves of trees

Policy Considerations

- Targets are faster met by existing trees growing
- Scaled mitigation approach can parallel scaled retention approach

Policy Approach

- Challenging but achievable
- Will apply to groves of trees and healthy individual trees
- Requirements in addition to future tree canopy goals





Policy Framework : Tree Replacement & Mitigation



Policy Purpose

- Helps determine what and how much needs to be replanted, planting alternatives, and other mitigation measures

Related Community Feedback

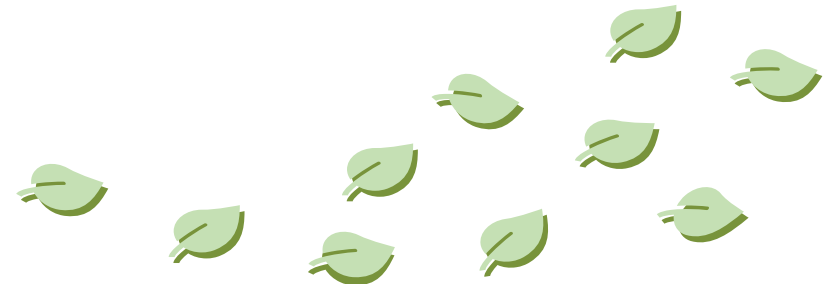
- 80% of survey respondents and 74% of workshop participants prefer “plentiful” or “dense’ tree coverage

Policy Considerations

- Reduces the risk of overplanting
- Ensures certain trees with specific functions are replaced
- Allows flexibility in planting to meet canopy goals

Policy Approach

- Medium replacement rates for priority trees
- Replacement based on canopy coverage
- Replacement at deficient site





Policy Framework : Enforcement



Policy Purpose

- Ensures compliance with tree regulations

Related Community Feedback

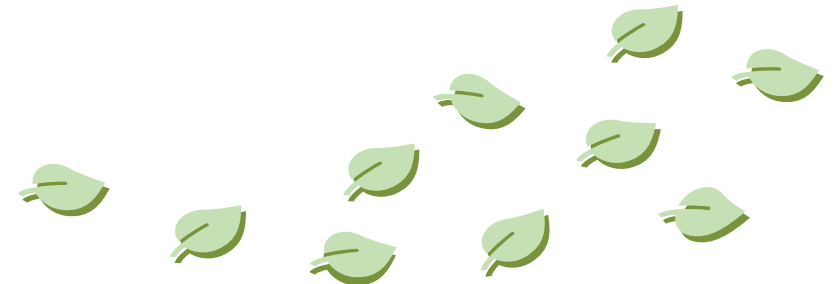
- Community acknowledges regulations are important to meet tree goals
- Top 3 concerns community has with trees are growing trees and infrastructure, lack of clarity on who is responsible for maintaining trees, and inappropriate pruning, maintenance, or removal

Policy Considerations

- Impactful enough to reduce violations without causing undue hardship

Policy Approach

- Tiered enforcement
- Less impacts on vulnerable populations



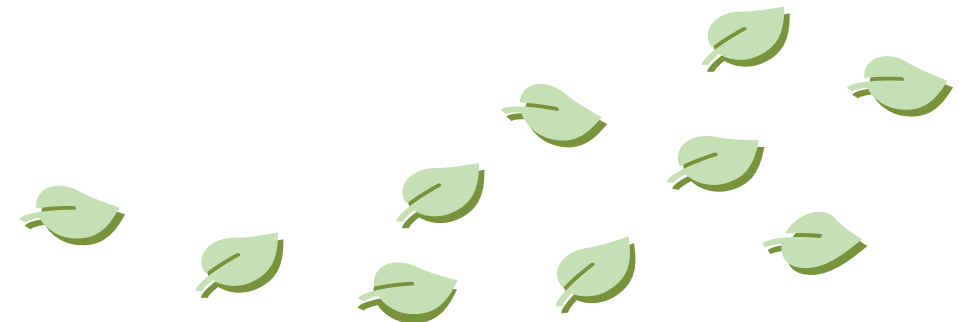
Discussion





Discussion Questions

- Does the Coalition have questions on the policy framework?
- Does the approach accurately reflect the community's goals?
- Are there neighborhood specific contexts/priorities that staff should be aware of as we move into policy development?
- Are there other topics the Coalition wants the project team to consider during policy development?



Thank You!



<https://engagegresham.org/gresham-tree-code>.